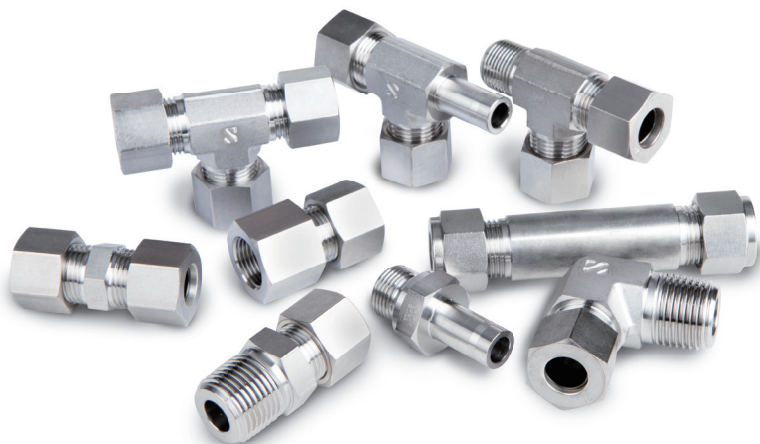


Bite Type Tube Fittings (JIS B2351)

The best partner for value creation
We support the innovations of customer



03



Catalogue No. S-LOK Mar.2024

General Information For Our Bite Type Tube Fittings.

HANSUN bite type tube fittings are precision-machined, under strict quality control. HANSUN bite type tube fittings are the flareless tube fitting with the visible bite. This added safety feature makes them the preferred fitting for non-flared tube connections.

How Do They Work?

The bite type flareless hydraulic tube fitting is designed to work on medium to heavy wall tubing that is hard to flare.

It consists of three parts :

1. body, 2. sleeve, 3. nut. (As shown in Fig-1)

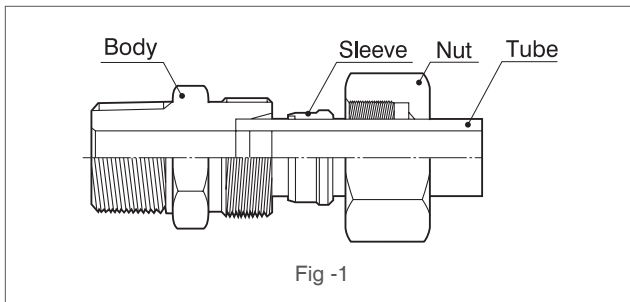


Fig - 1

The sleeve is driven forward on the tube by the nut.

As the sleeve moves forward it meets the seal seat angle of the body which causes the sleeve to cam inward into the tube. The sleeve then bites into the tube causing a small ridge of tube material to be pushed up in front of the biting edge of the sleeve. (As shown in Fig-2&3)

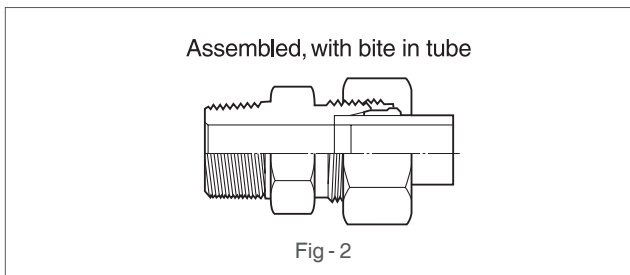


Fig - 2

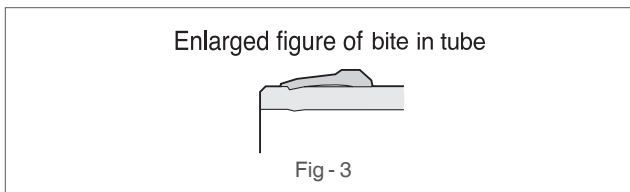


Fig - 3

The make-up of the fitting is critical in that the tube must be bottomed against the tube stop in the body or presetting tool during make up. If it is not bottomed the tube will move forward with the sleeve and a bite will not be achieved make sure the tube is bottomed.

A check is possible to see if the tube is bottomed during make up, To make this check inspect the end of the tube and see if a circular appearing ring has been impressed into the tube end face. This impression may be caused by the tube stop which has a slight reverse angle rather than a flat face.

Material Specifications

Parts	Steel	Stainless Steel	Brass
Forged body	S20C-S48C	SUS316 or A182 F316	C3771
Bar Stock Body	S20C-S48C	SUS316 or A276/A479 S316	C3604
Cold Formed Nut	S10C-S20C or JIS G3507		
Bar Stock Nut	S20C-S48C	SUS316-SUS304 or A276/A479 S316/S304	C3604
Sleeve	S10C	SUS316-SUS304 or A276/A479 S316/S304	C3604

Gasket and O-ring Temperature Ratings

Component	Material	Temperature Ratings
O-ring	NBR(Buna N)	-31°F to 230°F of (-35°C to 110°C)
	FKM(Viton®)	-20°F to 400°F (-28°C to 204°C)
SGC	Copper	-325°F to 400°F (-198°C to 204°C)
SGB	NBR(Buna N)	-13°F to 230°F of (-25°C to 110°C)
	FKM(Viton®)	5°F to 400°F (-15°C to 204°C)
Thread sealant teflon tape		-320°F to 450°F (-196°C to 232°C)

Applicable Pressure Rating

Our standard specifications of the fittings are as follows

Fitting Size (applicable Tube O.D)	4 ~ 15	16 ~ 22	25 ~ 28	30 ~ 38	40 ~ 45
Rated pressure (kgf/cm ²)	500	400	350	250	210
Max.working temperature (°C)	300				

The Rated Pressure for the fittings are determined based on the results of the design specification confirmed by severe repetitive tests; the rated pressures are determined for each size of fittings while the safety factor of as much as 4 is taken into account in the design.

↗ Suitable Tubing Materials

Common material of tubing includes :

Steel - Seamless, fully annealed, also welded and redrawn type suitable for bending. Maximum hardness, Rockwell B72.

Stainless Steel - Seamless, fully annealed, also welded redrawn, fully annealed suitable for bending. Maximum hardness, Rockwell B90.

Copper - Seamless coils, soft or light annealed, Maximum hardness Rockwell F55. Straight lengths. light drawn and general purpose. Maximum hardness of 60 on Rockwell 30T scale.

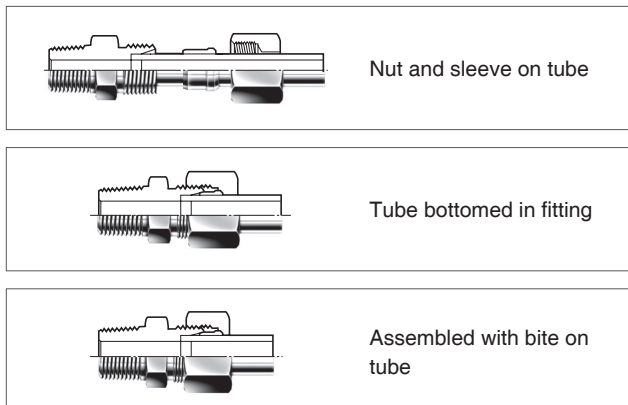
↗ Assembly Instructions

Cutting The Tube

Cut tube squarely and de-burr lightly the end both internally and externally.

Sleeve Placement

Slip nut and sleeve onto tubing. Be sure the long straight end of the sleeve points toward tube end.



Lubrication

Lightly lubricate threads on tool or body as well as the tail and lead end of the sleeve with extreme friction lubricant.

Pre-Setting

Insert tube end into tool or fitting until it sits on the shoulder (to hold tube motionless during pre-setting) and screw the nut down with finger tight.

Final Setting

Wrench nut down 1-1/2 turns to pre-set the sleeve (Reliable make-up of all flareless tube fittings is dependent upon the sleeve traveling a prescribed distance into tapered fitting throat in order to bite into the tube and effect a positive grip and seal.

↗ Reassemble For Final Installation

Insert the tube into the fitting body and wrench the nut down until a sudden increase in torque occurs. From this point turn the nut an additional 1/4 to 1/3 turn (1-1/2 to 2 wrench flats) to again spring the sleeve into place to seal against the tubing and the fitting body.

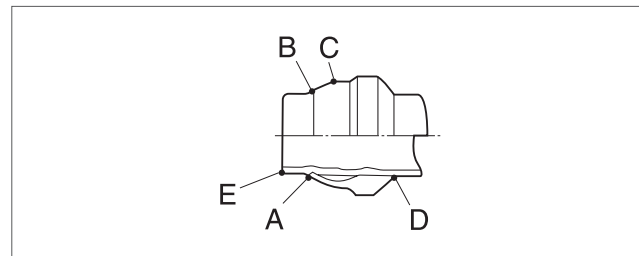
↗ Inspection Of Bite

All HANSUN bite type tube fittings must be disassembled and inspected for proper make-up before final assembly.

Detailed inspection procedures are outlined below and must be followed regardless of the method used to pre-set the sleeve to the tube.

↗ You Should Make Certain That

1. A ridge of metal has been raised above the tube surfaces, to a height of at least 50% of the thickness of the sleeve leading edge, completely around the tube (A)
2. While the leading edge of the sleeve may be coined flat (B) there is a slight bow to the balance of the pilot section (C)
3. The tail or back end of the sleeve is snugged against the tube (D)
4. There is a slight indentation all around the end of the tube (E) that indicates the tube was bottomed in the tool or fitting during pre-setting (unless evidence of this complete contact is visible the sleeve cannot be considered properly pre-set).
5. Avoid rotating the sleeve. Steel sleeve should not be capable of moving back and forth along tube, beyond the bite area (stainless steel sleeve will move more than steel because of its spring back characteristics).



↗ Trouble Shooting

Problems with bite type hydraulic fittings are most often traced to faulty make-up procedures. Look for the following :

1. Tube not bottomed

Check for the indentation on the tube end or compare length from end of tube to the front end of the sleeve with that of a known good assembly.

2. Lack of bite

inspect for turned up ridge of material. A failure to achieve this ridge can be traced either to the fact that the nut was not tightened enough or that the tube was not bottomed against the stop which allowed the tube to travel forward with the sleeve.

3. Sleeve cocked on tube

The sleeve is cocked on the tube when the tube assembly is off axis with that of the body. Generally this condition is caused by faulty tube bending. All bent tube assemblies should drop into the fitting body prior to make up.

4. No bite

If all of the above checks have been made and the sleeve still shows no sign of biting the tube, it may be that the tube is too hard.

Straight Union
BU



138

Union Elbow
BL



138

Union Tee
BT



139

Straight Bulkhead Union
BBU



139

Bulkhead Elbow
BBL



140

Long Male Connector
BLMC



140

Male Connector
BMC-R



141

Male Connector (For Bonded Seal)
BMC-G



142

Male Connector (For O-Ring)
BOM



143

Male Elbow
BLM



144

Long Male Elbow
BLLM



145

O-Seal Male Elbow
BOLM



145

Banjo Elbow
BSLM



146

Male Branch Tee
BBTM



146

Male Run Tee
BRTM



147

Bulkhead Female Connector
BBFC



147

Female Connector
BFC



148

Gauge Connector
BGC



148

Female Elbow
BLF



149

Female Branch Tee
BBTF



149

Female Run Tee
BRTF



150

Presetting Tools
BPST



150

Cap
BC



151

Plug
BP



151

Nut
BN



152

Sleeve
BS



152

Hose Male Union
BHUM



153

Hose Female Union
BHUF



153

Hose Bulkhead Male Union
BHBM



154

Hose Bulkhead Female Union
BHBF



154

Hose Male Elbow
BHLM



155

Hose Female Elbow
BHLF



155

Hose Bulkhead Male Elbow
BHBLM



156

Hose Bulkhead Female Elbow
BHBLF



156

Welding Connector
BCW



157

Welding Bulkhead Union
BBUW



157

Adapter
BA-R



158

Adapter (For Copper Gasket)
BA-G



158

Reducer
BR



159

Positionable Elbow
BLA



159

Positionable Branch Tee
BBTA



160

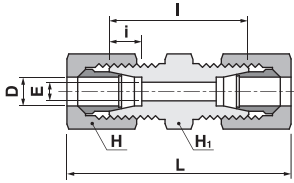
Positionable Run Tee
BRTA



160

Straight Union

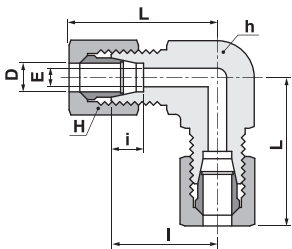
BU



Part No.	Tube O.D	E	Width across flat		i	l	Approx
	D		H ₁	H			L
BU-06	6	4	14	14	7	30	51
BU-08	8	6	17	17	7	31	52
BU-10	10	8	17	19	7	31	54
BU-12	12	10	19	22	7	31	54
BU-15	15	12	24	27	7.5	36	61
BU-16	16	13	27	30	7.5	36	61
BU-18	18	14	27	32	8	36	61
BU-20	20	17	30	36	8	38	63
BU-22	22	18	32	36	9	38	63
BU-25	25	20	36	41	10	38	66
BU-28	28	22	41	46	10	43	71
BU-30	30	25	41	46	10	43	72
BU-32	32	26	46	50	11	44	73
BU-35	35	28	46	55	11	44	79
BU-38	38	32	50	60	12	46	85
BU-40	40	32	55	60	12	55	94
BU-42	42	34	55	60	12	55	94
BU-06A	10.5	8	17	19	7	31	54
BU-08A	13.8	11	22	24	7.5	38	60
BU-10A	17.3	14	27	32	8	38	61
BU-15A	21.7	18	32	36	9	38	63
BU-20A	27.2	22	41	46	10	43	71
BU-25A	34.0	28	46	55	11	44	79
BU-32A	42.7	34	60	65	12	57	98
BU-40A	48.6	40	65	75	12	60	103

Union Elbow

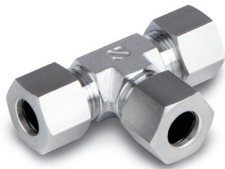
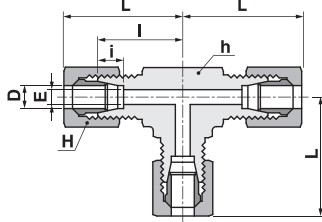
BL



Part No.	Tube O.D	E	Width across flat		i	l	Approx
	D		H ₁	H			L
BL-06	6	4	14	14	7	20	30.5
BL-08	8	6	17	17	7	23	33.5
BL-10	10	8	17	19	7	23	34.5
BL-12	12	10	19	22	7	24	35.5
BL-15	15	12	24	27	7.5	29	41.5
BL-16	16	13	27	30	7.5	32	44.5
BL-18	18	14	27	32	8	32	44.5
BL-20	20	17	30	36	8	33	45.5
BL-22	22	18	32	36	9	34	46.5
BL-25	25	20	36	41	10	36	49.5
BL-28	28	22	41	46	10	41	55
BL-30	30	25	41	46	10	41	55.5
BL-32	32	26	46	50	11	45	59.5
BL-35	35	28	46	55	11	48	63.5
BL-38	38	32	50	60	12	50	69.5
BL-40	40	32	55	60	12	55	74.5
BL-42	42	34	55	60	12	55	74.5
BL-06A	10.5	8	17	19	7	23	34.5
BL-08A	13.8	11	22	24	7.5	28	40
BL-10A	17.3	14	27	32	8	32	44.5
BL-15A	21.7	18	32	36	9	34	46.5
BL-20A	27.2	22	41	46	10	41	55
BL-25A	34.0	28	46	55	11	46	63.5
BL-32A	42.7	34	60	65	12	57	77.5
BL-40A	48.6	40	65	75	12	62	83.5

Union Tee

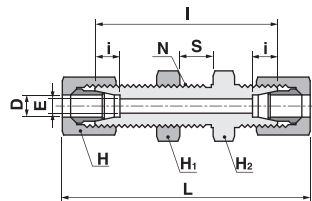
BT



Part No.	Tube O.D	E	Width across flat		i	I	Approx
	D		H ₁	H			L
BT-06	6	4	14	14	7	20	30.5
BT-08	8	6	17	17	7	23	33.5
BT-10	10	8	17	19	7	23	34.5
BT-12	12	10	19	22	7	24	35.5
BT-15	15	12	24	27	7.5	29	41.5
BT-16	16	13	27	30	7.5	32	44.5
BT-18	18	14	27	32	8	32	44.5
BT-20	20	17	30	36	8	33	45.5
BT-22	22	18	32	36	9	34	46.5
BT-25	25	20	36	41	10	36	49.5
BT-28	28	22	41	46	10	41	55
BT-30	30	25	41	46	10	41	55.5
BT-32	32	26	46	50	11	45	59.5
BT-35	35	28	46	55	11	48	63.5
BT-38	38	32	50	60	12	50	69.5
BT-40	40	32	55	60	12	55	74.5
BT-42	42	34	55	60	12	55	74.5
BT-06A	10.5	8	17	19	7	23	34.5
BT-08A	13.8	11	22	24	7.5	28	40
BT-10A	17.3	14	27	32	8	32	44.5
BT-15A	21.7	18	32	36	9	34	46.5
BT-20A	27.2	22	41	46	10	41	55
BT-25A	34.0	28	46	55	11	46	63.5
BT-32A	42.7	34	60	65	12	57	77.5
BT-40A	48.6	40	65	75	12	62	83.5

Straight Bulkhead Union

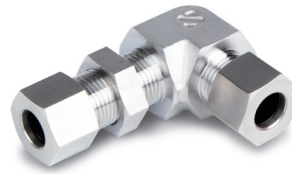
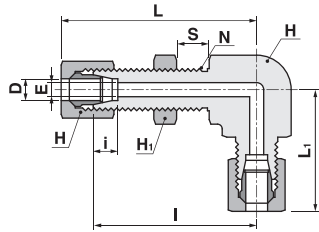
BBU



Part No.	Tube O.D	E	Width across flat		i	I	Approx	Panel Hole	Max. Panel
	D		H ₁	H			L	Drill Size	Thickness
							N	S	
BBU-06	6	4	17	14	7	51	51	12.5	13
BBU-08	8	6	19	17	7	51	52	14.5	13
BBU-10	10	8	22	19	7	52	54	16.5	13
BBU-12	12	10	24	22	7	52	54	18.5	13
BBU-15	15	12	27	27	7.5	59	61	22.5	15
BBU-16	16	13	30	30	7.5	61	61	24.5	15
BBU-18	18	14	32	32	8	63	61	26.5	15
BBU-20	20	17	32	36	8	63	63	28.5	15
BBU-22	22	18	36	36	9	64	63	30.5	15
BBU-25	25	20	41	41	10	64	66	35.5	15
BBU-28	28	22	46	46	10	69	71	38.5	15
BBU-30	30	25	46	46	10	69	72	40.5	15
BBU-32	32	26	50	50	11	73	73	42.5	15
BBU-35	35	28	50	55	11	73	79	45.5	15
BBU-38	38	32	55	60	12	76	85	48.5	15
BBU-40	40	32	60	60	12	87	94	52.5	15
BBU-06A	10.5	8	22	19	7	52	54	16.5	13
BBU-08A	13.8	11	27	24	7.5	59	60	20.5	15
BBU-10A	17.3	14	32	32	8	63	61	26.5	15
BBU-15A	21.7	18	36	36	9	64	63	30.5	15
BBU-20A	27.2	22	46	46	10	69	71	38.5	15
BBU-25A	34.0	28	50	55	11	73	79	45.5	15
BBU-32A	42.7	34	65	65	12	90	98	56.5	15
BBU-40A	48.6	40	70	75	12	93	103	64.5	15

Bulkhead Elbow

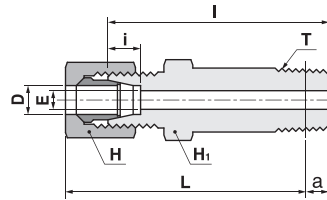
BBL



Part No.	Tube O.D	E	Width across flat			i	I	Approx		Panel Hole Drill Size N	Max. Panel Thickness S
	D		h	H ₁	H			L ₁	L		
BBL-06	6	4	17	17	14	7	45	33.5	55.5	12.5	13
BBL-08	8	6	19	19	17	7	46	34.5	56.5	14.5	13
BBL-10	10	8	22	22	19	7	48	37.5	59.5	16.5	13
BBL-12	12	10	24	24	22	7	49	38.5	60.5	18.5	13
BBL-15	15	12	27	27	27	7.5	57	43.5	69.5	22.5	15
BBL-16	16	13	30	30	30	7.5	59	45.5	71.5	24.5	15
BBL-18	18	14	32	32	32	8	63	45.5	75.5	26.5	15
BBL-20	20	17	32	32	36	8	65	45.5	77.5	28.5	15
BBL-22	22	18	36	36	36	9	65	48.5	77.5	30.5	15
BBL-25	25	20	41	41	41	10	68	52.5	81.5	35.5	15
BBL-28	28	22	41	46	46	10	70	55	84	38.5	15
BBL-30	30	25	46	46	46	10	74	60.5	88.5	40.5	15

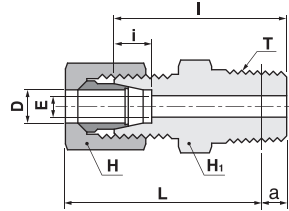
Long Male Connector

BLMC



Part No.	Tube O.D	PT T	E	Basic Gauge length a	Width across flat		i	I	Approx L
	D				H ₁	H			
BLMC-06-01R	6	1/8	4	3.97	14	14	7	63	69.5
BLMC-08-02R	8	1/4	6	6.01	17	17	7	70	74.5
BLMC-10-02R	10	1/4	7	6.01	17	19	7	71	76.5
BLMC-10-03R	10	3/8	8	6.35	19	19	7	72	77
BLMC-12-02R	12	1/4	7	6.01	19	22	7	71	76.5
BLMC-12-03R	12	3/8	9	6.35	19	22	7	72	77
BLMC-15-03R	15	3/8	9	6.35	24	27	7.5	81	87
BLMC-15-04R	15	1/2	12	8.16	24	27	7.5	86	90.5
BLMC-16-04R	16	1/2	12	8.16	27	30	7.5	86	90.5
BLMC-18-04R	18	1/2	12	8.16	27	32	8	86	90.5
BLMC-20-06R	20	3/4	16	9.53	30	36	8	92	95
BLMC-22-06R	22	3/4	16	9.53	32	36	9	93	96
BLMC-25-08R	25	1	20	10.39	36	41	10	99	102
BLMC-28-08R	28	1	22	10.39	41	46	10	104	107.5
BLMC-30-10R	30	1-1/4	25	12.7	46	46	10	109	111
BLMC-32-10R	32	1-1/4	26	12.7	46	50	11	110	112
BLMC-06A-02R	10.5	1/4	7	6.01	17	19	7	71	76.5
BLMC-08A-03R	13.8	3/8	9	6.35	22	24	7.5	81	86.5
BLMC-10A-03R	17.3	3/8	9	6.35	27	32	8	81	87
BLMC-15A-06R	21.7	3/4	16	9.53	32	36	9	93	96
BLMC-20A-08R	27.2	1	22	10.39	41	46	10	104	107.5

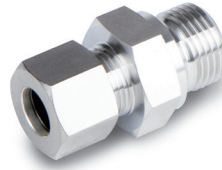
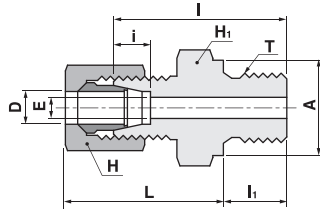
Male Connector

BMC-R

Part No.	Tube O.D	PT T	E	Basic Gauge length a	Width across flat		i	l	Approx
	D				H ₁	H			L
BMC-06-01R	6	1/8	4	3.97	14	14	7	28	34.5
BMC-06-02R	6	1/4	4	6.01	17	14	7	33	37.5
BMC-06-03R	6	3/8	4	6.35	17	14	7	34	38.5
BMC-08-01R	8	1/8	4	3.97	17	17	7	29	35.5
BMC-08-02R	8	1/4	6	6.01	17	17	7	33	37.5
BMC-10-02R	10	1/4	7	6.01	17	19	7	33	38.5
BMC-10-03R	10	3/8	8	6.35	19	19	7	34	39
BMC-10-04R	10	1/2	8	8.16	22	19	7	39	42.5
BMC-12-02R	12	1/4	7	6.01	19	22	7	33	38.5
BMC-12-03R	12	3/8	9	6.35	19	22	7	34	39
BMC-12-04R	12	1/2	10	8.16	22	22	7	39	42.5
BMC-15-03R	15	3/8	9	6.35	24	27	7.5	37	43
BMC-15-04R	15	1/2	12	8.16	24	27	7.5	41	45.5
BMC-16-03R	16	3/8	9	6.35	27	30	7.5	37	43
BMC-16-04R	16	1/2	12	8.16	27	30	7.5	41	45.5
BMC-18-04R	18	1/2	12	8.16	27	32	8	41	45.5
BMC-20-04R	20	1/2	12	8.16	30	36	8	43	47.5
BMC-20-06R	20	3/4	16	9.53	30	36	8	45	48
BMC-22-04R	22	1/2	12	8.16	32	36	9	43	47.5
BMC-22-06R	22	3/4	16	9.53	32	36	9	45	48
BMC-25-08R	25	1	20	10.39	36	41	10	49	52
BMC-28-08R	28	1	22	10.39	41	46	10	51	54.5
BMC-30-08R	30	1	22	10.39	41	46	10	51	55
BMC-30-10R	30	1-1/4	25	12.7	46	46	10	55	57
BMC-32-10R	32	1-1/4	26	12.7	46	50	11	55	57
BMC-35-10R	35	1-1/4	28	12.7	46	55	11	55	60
BMC-38-12R	38	1-1/2	32	12.7	50	60	12	57	64
BMC-40-12R	40	1-1/2	32	12.7	55	60	12	62	69
BMC-42-12R	42	1-1/2	34	12.7	55	60	12	62	69
BMC-06A-01R	10.5	1/8	4	3.97	17	19	7	29	36.5
BMC-06A-02R	10.5	1/4	7	6.01	17	19	7	33	38.5
BMC-08A-02R	13.8	1/4	7	6.01	22	24	7.5	36	42
BMC-08A-03R	13.8	3/8	9	6.35	22	24	7.5	37	42.5
BMC-10A-03R	17.3	3/8	9	6.35	27	32	8	37	43
BMC-10A-04R	17.3	1/2	12	8.16	27	32	8	41	45.5
BMC-15A-04R	21.7	1/2	12	8.16	32	36	9	43	47.5
BMC-15A-06R	21.7	3/4	16	9.53	32	36	9	45	48
BMC-20A-06R	27.2	3/4	16	9.53	41	46	10	48	52.5
BMC-20A-08R	27.2	1	22	10.39	41	46	10	51	54.5
BMC-25A-08R	34.0	1	22	10.39	46	55	11	52	59
BMC-25A-10R	34.0	1-1/4	28	12.7	46	55	11	55	60
BMC-32A-10R	42.7	1-1/4	31	12.7	60	65	12	64	72
BMC-32A-12R	42.7	1-1/2	34	12.7	60	65	12	64	72
BMC-40A-12R	48.6	1-1/2	36	12.7	65	75	12	67	76
BMC-40A-16R	48.6	2	40	15.88	65	75	12	71	76.5

Male Connector
(For Bonded Seal)

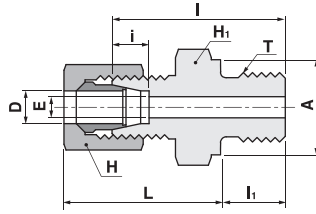
BMC-G



Part No.	Tube O.D	PF T	E	Width across flat		i	l	A	l ₁	Approx
	D			H ₁	H					L
BMC-06-01G	6	1/8	4	14	14	7	28	14	8	30.5
BMC-06-02G	6	1/4	4	19	14	7	33	18	12	31.5
BMC-08-01G	8	1/8	4	17	17	7	28	14	8	30.5
BMC-08-02G	8	1/4	6	19	17	7	33	18	12	31.5
BMC-10-02G	10	1/4	7	19	19	7	33	18	12	32.5
BMC-10-03G	10	3/8	8	22	19	7	34	21.5	12	33.5
BMC-12-02G	12	1/4	7	19	22	7	33	18	12	32.5
BMC-12-03G	12	3/8	9	22	22	7	34	21.5	12	33.5
BMC-12-04G	12	1/2	10	27	22	7	39	25.5	14	36.5
BMC-15-03G	15	3/8	9	24	27	7.5	37	21.5	12	37.5
BMC-15-04G	15	1/2	12	27	27	7.5	41	25.5	14	39.5
BMC-16-04G	16	1/2	12	27	30	7.5	41	25.5	14	39.5
BMC-18-04G	18	1/2	12	27	32	8	41	25.5	14	39.5
BMC-20-06G	20	3/4	16	32	36	8	46	31.5	16	42.5
BMC-22-04G	22	1/2	12	32	36	9	43	25.5	14	41.5
BMC-22-06G	22	3/4	16	32	36	9	46	31.5	16	42.5
BMC-25-06G	25	3/4	16	36	41	10	46	31.5	16	43.5
BMC-25-08G	25	1	20	41	41	10	50	38	18	45.5
BMC-28-08G	28	1	22	41	46	10	52	38	18	48
BMC-30-08G	30	1	22	41	46	10	52	38	18	48.5
BMC-30-10G	30	1-1/4	25	50	46	10	57	48.5	20	51.5
BMC-32-10G	32	1-1/4	26	50	50	11	57	48.5	20	51.5
BMC-35-10G	35	1-1/4	28	50	55	11	57	48.5	20	54.5
BMC-38-12G	38	1-1/2	32	55	60	12	58	53.5	21	56.5
BMC-40-12G	40	1-1/2	32	55	60	12	62	53.5	21	60.5
BMC-42-12G	42	1-1/2	34	55	60	12	62	53.5	21	60.5
BMC-06A-01G	10.5	1/8	4	17	19	7	29	14	8	32.5
BMC-06A-02G	10.5	1/4	7	19	19	7	33	18	12	32.5
BMC-08A-02G	13.8	1/4	7	22	24	7.5	36	18	12	36
BMC-08A-03G	13.8	3/8	9	22	24	7.5	36	21.5	12	36
BMC-10A-03G	17.3	3/8	9	27	32	8	38	21.5	12	38.5
BMC-10A-04G	17.3	1/2	12	27	32	8	41	25.5	14	39.5
BMC-15A-04G	21.7	1/2	12	32	36	9	43	25.5	14	41.5
BMC-15A-06G	21.7	3/4	16	32	36	9	46	31.5	16	42.5
BMC-20A-06G	27.2	3/4	16	41	46	10	50	31.5	16	48
BMC-20A-08G	27.2	1	22	41	46	10	52	38	18	48
BMC-25A-08G	34.0	1	22	46	55	11	54	38	18	53.5
BMC-25A-10G	34.0	1-1/4	28	50	55	11	57	48.5	20	54.5
BMC-32A-10G	42.7	1-1/4	31	60	65	12	60	48.5	20	63.5
BMC-32A-12G	42.7	1-1/2	34	60	65	12	64	53.5	21	63.5
BMC-40A-12G	48.6	1-1/2	36	65	75	12	65	53.5	21	65.5
BMC-40A-16G	48.6	2	40	70	75	12	73	66	25	69.5

Male Connector
(For O-Ring)

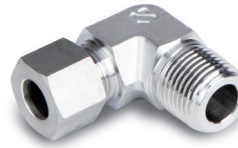
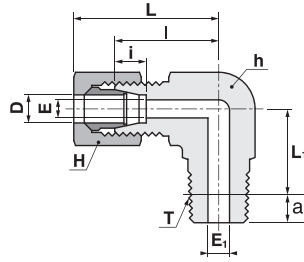
BOM



Part No.	Tube O.D	PF T	E	Width across flat		i	I	A	I ₁	Approx
	D			H ₁	H					L
BOM-06-01G	6	1/8	4	14	14	7	28	14	8	30.5
BOM-06-02G	6	1/4	4	19	14	7	33	19	12	31.5
BOM-08-01G	8	1/8	4	17	17	7	28	14	8	30.5
BOM-08-02G	8	1/4	6	19	17	7	33	19	12	31.5
BOM-10-02G	10	1/4	7	19	19	7	33	19	12	32.5
BOM-10-03G	10	3/8	8	22	19	7	34	22	12	33.5
BOM-12-02G	12	1/4	7	19	22	7	33	19	12	32.5
BOM-12-03G	12	3/8	9	22	22	7	34	22	12	33.5
BOM-12-04G	12	1/2	10	27	22	7	39	27	14	36.5
BOM-15-03G	15	3/8	9	24	27	7.5	37	22	12	37.5
BOM-15-04G	15	1/2	12	27	27	7.5	41	27	14	39.5
BOM-16-04G	16	1/2	12	27	30	7.5	41	27	14	39.5
BOM-18-04G	18	1/2	12	27	32	8	41	27	14	39.5
BOM-20-06G	20	3/4	16	36	36	8	46	36	16	42.5
BOM-22-06G	22	3/4	16	36	36	9	46	36	16	42.5
BOM-25-06G	25	3/4	16	36	41	10	46	36	16	43.5
BOM-25-08G	25	1	20	41	41	10	50	41	18	45.5
BOM-28-08G	28	1	22	41	46	10	52	41	18	48
BOM-30-08G	30	1	22	41	46	10	52	41	18	48.5
BOM-30-10G	30	1-1/4	25	50	46	10	57	50	20	51.5
BOM-32-10G	32	1-1/4	26	50	50	11	57	50	20	51.5
BOM-35-10G	35	1-1/4	28	50	55	11	57	50	20	54.5
BOM-38-12G	38	1-1/2	32	55	60	12	58	55	21	56.5
BOM-40-12G	40	1-1/2	32	55	60	12	62	55	21	60.5
BOM-42-12G	42	1-1/2	34	55	60	12	62	55	21	60.5
BOM-06A-01G	10.5	1/8	4	17	19	7	29	14	8	32.5
BOM-06A-02G	10.5	1/4	7	19	19	7	33	19	12	32.5
BOM-08A-02G	13.8	1/4	7	22	24	7.5	36	19	12	36
BOM-08A-03G	13.8	3/8	9	22	24	7.5	36	22	12	36
BOM-10A-03G	17.3	3/8	9	27	32	8	38	22	12	38.5
BOM-10A-04G	17.3	1/2	12	27	32	8	41	27	14	39.5
BOM-15A-04G	21.7	1/2	12	32	36	9	43	27	14	41.5
BOM-15A-06G	21.7	3/4	16	36	36	9	46	36	16	42.5
BOM-20A-06G	27.2	3/4	16	41	46	10	50	36	16	48
BOM-20A-08G	27.2	1	22	41	46	10	52	41	18	48
BOM-25A-08G	34.0	1	22	46	55	11	54	41	18	53.5
BOM-25A-10G	34.0	1-1/4	28	50	55	11	57	50	20	54.5
BOM-32A-10G	42.7	1-1/4	31	60	65	12	63	50	20	63.5
BOM-32A-12G	42.7	1-1/2	34	60	65	12	64	55	21	63.5
BOM-40A-12G	48.6	1-1/2	36	65	75	12	65	55	21	65.5
BOM-40A-16G	48.6	2	40	75	75	12	73	75	25	69.5

Male Elbow

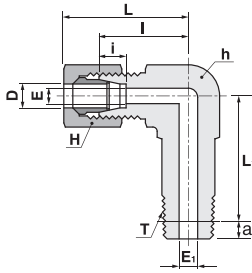
BLM



Part No.	Tube O.D	PT	E	E ₁	Basic Gauge length a	Width across flat		i	l	Approx	
	D					h	H			L	L ₁
BLM-06-01R	6	1/8	4	4	3.97	14	14	7	20	30.5	14
BLM-06-02R	6	1/4	4	7	6.01	17	14	7	23	33.5	17
BLM-08-01R	8	1/8	6	4	3.97	17	17	7	23	33.5	16
BLM-08-02R	8	1/4	6	7	6.01	17	17	7	23	33.5	18
BLM-10-02R	10	1/4	8	7	6.01	17	19	7	23	34.5	19
BLM-10-03R	10	3/8	8	9	6.35	19	19	7	24	35.5	19.5
BLM-10-04R	10	1/2	8	12	8.16	22	19	7	29	40.5	26
BLM-12-02R	12	1/4	10	7	6.01	19	22	7	24	35.5	20
BLM-12-03R	12	3/8	10	9	6.35	19	22	7	24	35.5	20.5
BLM-12-04R	12	1/2	10	12	8.16	22	22	7	29	40.5	26
BLM-15-03R	15	3/8	12	9	6.35	24	27	7.5	29	41.5	23.5
BLM-15-04R	15	1/2	12	12	8.16	24	27	7.5	29	41.5	26
BLM-16-03R	16	3/8	13	9	6.35	27	30	7.5	32	44.5	25.5
BLM-16-04R	16	1/2	13	12	8.16	27	30	7.5	32	44.5	27
BLM-18-03R	18	3/8	4	9	6.35	27	32	8	32	44.5	27.5
BLM-18-04R	18	1/2	14	12	8.16	27	32	8	32	44.5	30
BLM-20-04R	20	1/2	17	12	8.16	30	36	8	33	45.5	32
BLM-20-06R	20	3/4	17	16	9.53	30	36	8	33	45.5	30.5
BLM-22-04R	22	1/2	18	12	8.16	32	36	9	34	46.5	32
BLM-22-06R	22	3/4	18	16	9.53	32	36	9	34	46.5	32.5
BLM-25-06R	25	3/4	20	16	9.53	36	41	10	36	49.5	33.5
BLM-25-08R	25	1	20	22	10.39	36	41	10	36	49.5	35.5
BLM-28-06R	28	3/4	22	16	9.53	41	46	10	41	55	37.5
BLM-28-08R	28	1	22	22	10.39	41	46	10	41	55	39.5
BLM-30-08R	30	1	25	22	10.39	41	46	10	41	55.5	39.5
BLM-30-10R	30	1-1/4	25	31	12.7	46	46	10	46	60.5	42.5
BLM-32-10R	32	1-1/4	26	31	12.7	46	50	11	46	60.5	43.5
BLM-35-10R	35	1-1/4	28	31	12.7	46	55	11	46	63.5	45.5
BLM-38-12R	38	1-1/2	32	36	12.7	50	60	12	50	69.5	48.5
BLM-40-12R	40	1-1/2	32	36	12.7	55	60	12	55	74.5	49.5
BLM-42-12R	42	1-1/2	34	36	12.7	55	60	12	55	74.5	49.5
BLM-06A-01R	10.5	1/8	8	4	3.97	17	19	7	23	34.5	17
BLM-06A-02R	10.5	1/4	8	7	6.01	17	19	7	23	34.5	19
BLM-08A-02R	13.8	1/4	11	7	6.01	22	24	7.5	28	40	22
BLM-08A-03R	13.8	3/8	11	9	6.35	22	24	7.5	28	40	22.5
BLM-10A-03R	17.3	3/8	14	9	6.35	27	32	8	32	44.5	27.5
BLM-10A-04R	17.3	1/2	14	12	8.16	27	32	8	32	44.5	30
BLM-15A-04R	21.7	1/2	18	12	8.16	32	36	9	34	46.5	32
BLM-15A-06R	21.7	3/4	18	16	9.53	32	36	9	34	46.5	32.5
BLM-20A-06R	27.2	3/4	22	16	9.53	41	46	10	41	55	37.5
BLM-20A-08R	27.2	1	22	22	10.39	41	46	10	41	55	39.5
BLM-25A-08R	34.0	1	28	22	10.39	46	55	11	46	63.5	44.5
BLM-25A-10R	34.0	1-1/4	28	31	12.7	46	55	11	46	63.5	45.5
BLM-32A-10R	42.7	1-1/4	34	31	12.7	60	65	12	57	77.5	51.5
BLM-32A-12R	42.7	1-1/2	34	36	12.7	60	65	12	57	77.5	51.5
BLM-40A-12R	48.6	1-1/2	40	36	12.7	65	75	12	62	83.5	57.5
BLM-40A-16R	48.6	2	40	46	15.88	65	75	12	62	83.5	58

Long Male Elbow

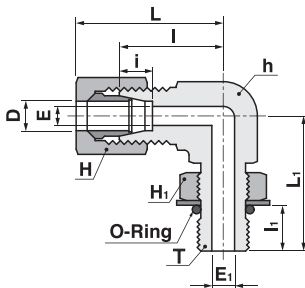
BLLM



Part No.	Tube O.D	PT	E	E ₁	Basic Gauge length a	Width across flat				Approx	
	D					h	H	i	l	L	L ₁
BLLM-06-01R	6	1/8	4	4	3.97	14	14	7	20	30.5	36
BLLM-08-02R	8	1/4	6	7	6.01	17	17	7	23	33.5	43
BLLM-10-02R	10	1/4	8	7	6.01	17	19	7	23	34.5	46
BLLM-12-02R	12	1/4	10	7	6.01	19	22	7	24	35.5	52
BLLM-12-03R	12	3/8	10	9	6.35	19	22	7	24	35.5	53
BLLM-15-03R	15	3/8	12	9	6.35	24	27	7.5	29	41.5	61.5
BLLM-15-04R	15	1/2	12	12	8.16	24	27	7.5	29	41.5	67
BLLM-16-04R	16	1/2	13	12	8.16	27	30	7.5	32	44.5	70
BLLM-18-04R	18	1/2	14	12	8.16	27	32	8	32	44.5	77
BLLM-20-06R	20	3/4	17	16	9.53	30	36	8	33	45.5	82.5
BLLM-22-06R	22	3/4	18	16	9.53	32	36	9	34	46.5	83.5
BLLM-25-06R	25	3/4	20	16	9.53	36	41	10	36	49.5	90.5
BLLM-25-08R	25	1	20	22	10.39	36	41	10	36	49.5	91.5
BLLM-28-08R	28	1	22	22	10.39	41	46	10	41	55	104.5
BLLM-30-10R	30	1-1/4	25	31	12.7	46	46	10	46	60.5	104.5
BLLM-32-10R	32	1-1/4	26	31	12.7	46	50	11	46	60.5	104.5
BLLM-35-10R	35	1-1/4	28	31	12.7	46	55	11	46	63.5	121.5

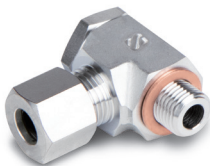
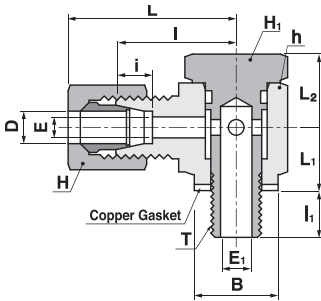
O-Seal Male Elbow

BOLM



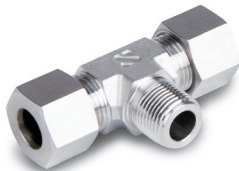
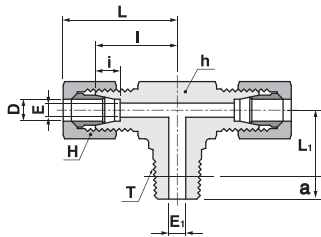
Part No.	Tube O.D	PF	E	E ₁	Width across flat			i	l	l ₁	Approx	
	D				h	H ₁	H				L	L ₁
BOLM-06-01G	6	1/8	4	4	14	14	14	7	20	10	30.5	30
BOLM-08-02G	8	1/4	6	6	17	19	17	7	23	12	33.5	34
BOLM-10-02G	10	1/4	8	6	17	19	19	7	23	12	34.5	35
BOLM-12-02G	12	1/4	10	6	19	19	22	7	24	12	35.5	36
BOLM-12-03G	12	3/8	10	9	19	22	22	7	24	12	35.5	36
BOLM-12-04G	12	1/2	10	12	24	27	22	7	24	16	40.5	46
BOLM-15-03G	15	3/8	12	9	24	22	27	7.5	29	12	41.5	40
BOLM-15-04G	15	1/2	12	12	24	27	27	7.5	29	16	41.5	46
BOLM-16-04G	16	1/2	13	12	24	27	30	7.5	32	16	44.5	46
BOLM-18-04G	18	1/2	14	12	30	27	32	8	32	16	44.5	52
BOLM-20-06G	20	3/4	17	16	30	36	36	8	33	17	45.5	52
BOLM-22-06G	22	3/4	18	16	32	36	36	9	34	17	46.5	52
BOLM-25-06G	25	3/4	20	16	36	36	41	10	36	17	49.5	60
BOLM-25-08G	25	1	20	22	36	41	41	10	36	21	49.5	62
BOLM-28-08G	28	1	22	22	41	41	46	10	41	21	55	62
BOLM-30-08G	30	1	25	22	41	41	46	10	41	21	55.5	66
BOLM-30-10G	30	1-1/4	25	31	46	50	46	10	44	21	60.5	66
BOLM-32-10G	32	1-1/4	26	31	46	50	50	11	46	21	60.5	66
BOLM-35-10G	35	1-1/4	28	31	46	50	55	11	46	21	63.5	66
BOLM-38-12G	38	1-1/2	32	36	50	55	60	12	50	21	69.5	73

Banjo Elbow
BSLM



Part No.	Tube O.D	PF T	E	E ₁	Width across flat			i	I	I ₁	Approx			B
	D				h	H ₁	H				L	L ₁	L ₂	
BSLM-06-01G	6	1/8	4	4	17	17	14	7	23	8	33.5	13	14	14
BSLM-08-02G	8	1/4	6	7	22	22	17	7	25	12	35.5	16	17	19.1
BSLM-10-02G	10	1/4	8	7	22	22	19	7	25	12	36.5	16	17	19.1
BSLM-12-03G	12	3/8	10	9	27	27	22	7	29	12	40.5	19	22	21.5
BSLM-15-04G	15	1/2	12	12	36	30	27	7.5	36	14	48.5	24	28	25.5
BSLM-16-04G	16	1/2	13	12	36	30	30	7.5	36	14	48.5	24	28	25.5
BSLM-18-04G	18	1/2	14	12	36	30	32	8	36	14	48.5	24	28	25.5
BSLM-20-06G	20	3/4	17	16	41	41	36	8	38	16	50.5	28	32	31.5
BSLM-22-06G	22	3/4	18	16	42	41	36	9	38	16	50.5	28	32	31.5
BSLM-25-08G	25	1	20	22	50	50	41	10	42	18	55.5	37	38	38
BSLM-28-08G	28	1	22	22	50	50	46	10	42	18	56	37	38	38
BSLM-06A-02G	10.5	1/4	8	7	22	22	19	7	25	12	36.5	16	17	18
BSLM-08A-03G	13.8	3/8	11	9	27	27	24	7.5	29	12	41	19	22	21.5
BSLM-10A-04G	17.3	1/2	14	12	36	30	32	8	36	14	48.5	24	28	25.5
BSLM-15A-06G	21.7	3/4	18	16	41	41	36	9	38	16	50.5	28	32	31.5
BSLM-20A-08G	27.2	1	22	22	50	50	46	10	42	18	56	37	38	38

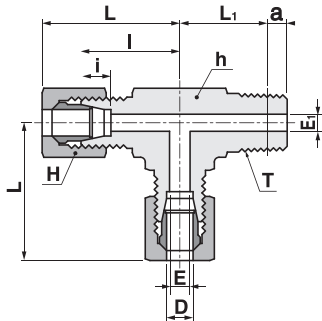
Male Branch Tee
BBTM



Part No.	Tube O.D	PT T	E	E ₁	Basic Gauge length a	Width across flat		i	I	Approx		
	D					h	H			L	L ₁	
BBTM-06-01R	6	1/8	4	4	3.97	14	14	7	20	30.5	14	
BBTM-06-02R	6	1/4	4	7	6.01	17	14	7	23	33.5	17	
BBTM-08-01R	8	1/8	6	4	3.97	17	17	7	23	33.5	16	
BBTM-08-02R	8	1/4	6	7	6.01	17	17	7	23	33.5	18	
BBTM-10-02R	10	1/4	8	7	6.01	17	19	7	23	34.5	19	
BBTM-10-03R	10	3/8	8	9	6.35	19	19	7	24	35.5	19.5	
BBTM-12-02R	12	1/4	10	7	6.01	19	22	7	24	35.5	20	
BBTM-12-03R	12	3/8	10	9	6.35	19	22	7	24	35.5	20.5	
BBTM-15-03R	15	3/8	12	9	6.35	24	27	7.5	29	41.5	23.5	
BBTM-15-04R	15	1/2	12	12	8.16	24	27	7.5	29	41.5	26	
BBTM-16-04R	16	1/2	13	12	8.16	27	30	7.5	32	44.5	27	
BBTM-18-04R	18	1/2	14	12	8.16	27	32	8	32	44.5	30	
BBTM-20-06R	20	3/4	17	16	9.53	30	36	8	33	45.5	30.5	
BBTM-22-06R	22	3/4	18	16	9.53	32	36	9	34	46.5	32.5	
BBTM-25-06R	25	3/4	20	16	9.53	36	41	10	36	49.5	33.5	
BBTM-25-08R	25	1	20	22	10.39	36	41	10	36	49.5	35.5	
BBTM-28-08R	28	1	22	22	10.39	41	46	10	41	55	39.5	
BBTM-30-08R	30	1	25	22	10.39	41	46	10	41	55.5	39.5	
BBTM-30-10R	30	1-1/4	25	31	12.7	46	46	10	46	60.5	42.5	
BBTM-32-10R	32	1-1/4	26	31	12.7	46	50	11	46	60.5	43.5	
BBTM-35-10R	35	1-1/4	28	31	12.7	46	55	11	46	63.5	45.5	
BBTM-38-12R	38	1-1/2	32	36	12.7	50	60	12	50	69.5	48.5	
BBTM-40-12R	40	1-1/2	32	36	12.7	55	60	12	55	74.5	49.5	
BBTM-06A-02R	10.5	1/4	8	7	6.01	17	19	7	23	34.5	19	
BBTM-08A-03R	13.8	3/8	11	9	6.35	22	24	7.5	28	40	22.5	
BBTM-10A-04R	17.3	1/2	14	12	8.16	27	32	8	32	44.5	30	
BBTM-15A-06R	21.7	3/4	18	16	9.53	32	36	9	34	46.5	32.5	
BBTM-20A-08R	27.2	1	22	22	10.39	41	46	10	41	55	39.5	
BBTM-25A-10R	34.0	1-1/4	28	31	12.7	46	55	11	46	63.5	45.5	
BBTM-32A-12R	42.7	1-1/2	34	36	12.7	60	65	12	57	77.5	51.5	
BBTM-40A-16R	48.6	2	40	46	15.88	65	75	12	62	83.5	58	

Male Run Tee

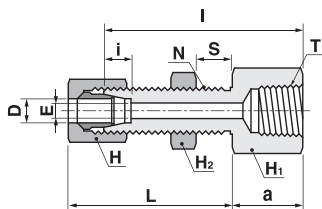
BRTM



Part No.	Tube O.D	PT	E	E ₁	Basic Gauge length a	Width across flat		i	l	Approx	
	D					h	H			L	L ₁
BRTM-06-01R	6	1/8	4	4	3.97	14	14	7	20	30.5	14
BRTM-06-02R	6	1/4	4	7	6.01	17	14	7	23	33.5	17
BRTM-08-01R	8	1/8	6	4	3.97	17	17	7	23	33.5	16
BRTM-08-02R	8	1/4	6	7	6.01	17	17	7	23	33.5	18
BRTM-10-02R	10	1/4	8	7	6.01	17	19	7	23	34.5	19
BRTM-10-03R	10	3/8	8	9	6.35	19	19	7	24	35.5	19.5
BRTM-12-02R	12	1/4	10	7	6.01	19	22	7	24	35.5	20
BRTM-12-03R	12	3/8	10	9	6.35	19	22	7	24	35.5	20.5
BRTM-15-03R	15	3/8	12	9	6.35	24	27	7.5	29	41.5	23.5
BRTM-15-04R	15	1/2	12	12	8.16	24	27	7.5	29	41.5	26
BRTM-16-04R	16	1/2	13	12	8.16	27	30	7.5	32	44.5	27
BRTM-18-04R	18	1/2	14	12	8.16	27	32	8	32	44.5	30
BRTM-20-06R	20	3/4	17	16	9.53	30	36	8	33	45.5	30.5
BRTM-22-06R	22	3/4	18	16	9.53	32	36	9	34	46.5	32.5
BRTM-25-06R	25	3/4	20	16	9.53	36	41	10	36	49.5	33.5
BRTM-25-08R	25	1	20	22	10.39	36	41	10	36	49.5	35.5
BRTM-28-08R	28	1	22	22	10.39	41	46	10	41	55	39.5
BRTM-30-08R	30	1	25	22	10.39	41	46	10	41	55.5	39.5
BRTM-30-10R	30	1-1/4	25	31	12.7	46	46	10	46	60.5	42.5
BRTM-32-10R	32	1-1/4	26	31	12.7	46	50	11	46	60.5	43.5
BRTM-35-10R	35	1-1/4	28	31	12.7	46	55	11	46	63.5	45.5
BRTM-38-12R	38	1-1/2	32	36	12.7	50	60	12	50	69.5	48.5
BRTM-40-12R	40	1-1/2	32	36	12.7	55	60	12	55	74.5	49.5
BRTM-06A-02R	10.5	1/4	8	7	6.01	17	19	7	23	34.5	19
BRTM-08A-03R	13.8	3/8	11	9	6.35	22	24	7.5	28	40	22.5
BRTM-10A-04R	17.3	1/2	14	12	8.16	27	32	8	32	44.5	30
BRTM-15A-06R	21.7	3/4	18	16	9.53	32	36	9	34	46.5	32.5
BRTM-20A-08R	27.2	1	22	22	10.39	41	46	10	41	55	39.5
BRTM-25A-10R	34.0	1-1/4	28	31	12.7	46	55	11	46	63.5	45.5
BRTM-32A-12R	42.7	1-1/2	34	36	12.7	60	65	12	57	77.5	51.5
BRTM-40A-16R	48.6	2	40	46	15.88	65	75	12	62	83.5	58

Bulkhead Female Connector

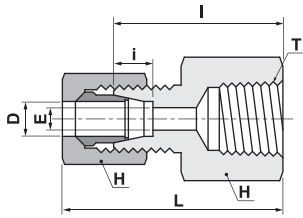
BBFC



Part No.	Tube O.D	PT	E	Width across flat			i	l	a	Approx	Panel Hole	Max. Panel
	D			H ₂	H ₁	H				L	Drill Size	Thickness
BBFC-06-01R	6	1/8	4	17	17	14	7	45	13	42.5	12.5	13
BBFC-08-02R	8	1/4	6	19	19	17	7	50	18	42.5	14.5	13
BBFC-10-02R	10	1/4	8	22	19	19	7	50	18	43.5	16.5	13
BBFC-10-03R	10	3/8	8	22	24	19	7	52	20	43.5	16.5	13
BBFC-12-02R	12	1/4	10	24	19	22	7	50	18	43.5	18.5	13
BBFC-12-03R	12	3/8	10	24	24	22	7	52	20	43.5	18.5	13
BBFC-15-03R	15	3/8	12	27	27	27	7.5	57	20	49.5	22.5	15
BBFC-15-04R	15	1/2	12	27	30	27	7.5	62	25	49.5	22.5	15
BBFC-16-04R	16	1/2	13	30	30	30	7.5	62	25	49.5	24.5	15
BBFC-18-04R	18	1/2	14	32	30	32	8	64	25	51.5	16.5	15
BBFC-20-06R	20	3/4	17	32	36	36	8	66	27	51.5	28.5	15
BBFC-22-06R	22	3/4	18	36	36	36	9	66	27	51.5	30.5	15
BBFC-25-08R	25	1	20	41	46	41	10	70	31	52.5	35.5	15
BBFC-28-08R	28	1	22	46	46	46	10	72	31	55	38.5	15
BBFC-30-08R	30	1	25	46	46	46	10	72	31	55.5	40.5	15
BBFC-32-10R	32	1-1/4	26	46	55	50	11	78	35	57.5	42.5	15

Female Connector

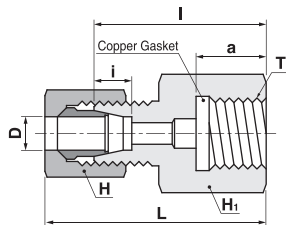
BFC



Part No.	Tube O.D	PT	E	Width across flat		i	l	Approx L
	D			H ₁	H			
BFC-06-01R	6	1/8	4	17	14	7	25	35.5
BFC-08-02R	8	1/4	6	19	17	7	30	40.5
BFC-10-02R	10	1/4	8	19	19	7	30	41.5
BFC-10-03R	10	3/8	8	24	19	7	32	43.5
BFC-12-02R	12	1/4	10	19	22	7	30	41.5
BFC-12-03R	12	3/8	10	24	22	7	32	43.5
BFC-15-03R	15	3/8	12	24	27	7.5	34	46.5
BFC-15-04R	15	1/2	12	30	27	7.5	39	51.5
BFC-16-04R	16	1/2	13	30	30	7.5	39	51.5
BFC-18-04R	18	1/2	14	30	32	8	39	51.5
BFC-20-06R	20	3/4	17	36	36	8	41	53.5
BFC-22-06R	22	3/4	18	36	36	9	41	53.5
BFC-25-06R	25	3/4	20	36	41	10	41	54.5
BFC-25-08R	25	1	20	46	41	10	45	58.5
BFC-28-08R	28	1	22	46	46	10	47	61
BFC-30-08R	30	1	25	46	46	10	47	61.5
BFC-30-10R	30	1-1/4	25	55	46	10	51	65.5
BFC-32-10R	32	1-1/4	26	55	50	11	51	65.5
BFC-35-10R	35	1-1/4	28	55	55	11	51	68.5
BFC-38-12R	38	1-1/2	32	65	60	12	51	70.5
BFC-40-12R	40	1-1/2	32	65	60	12	55	74.5
BFC-42-12R	42	1-1/2	34	65	60	12	55	74.5
BFC-06A-02R	10.5	1/4	8	19	19	7	30	41.5
BFC-08A-03R	13.8	3/8	11	24	24	7.5	34	46
BFC-10A-04R	17.3	1/2	14	30	32	8	39	51.5
BFC-15A-06R	21.7	3/4	18	36	36	9	41	53.5
BFC-20A-08R	27.2	1	22	46	46	10	47	61
BFC-25A-10R	34.0	1-1/4	28	55	55	11	51	68.5
BFC-32A-12R	42.7	1-1/2	34	65	65	12	55	78.5
BFC-40A-16R	48.6	2	40	80	75	12	60	81.5

Gauge Connector

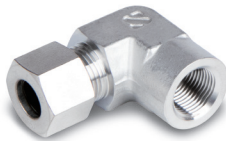
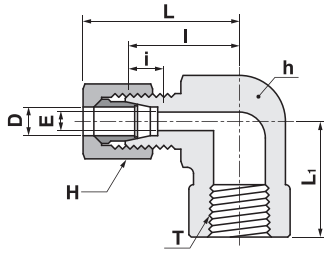
BGC



Part No.	Tube O.D	PF	a	Width across flat		i	l	Approx L
	D			H ₁	H			
BGC-06-02G	6	1/4	14	19	14	7	32	42.5
BGC-06-03G	6	3/8	15	24	14	7	34	44.5
BGC-06-04G	6	1/2	16	30	14	7	36	46.5
BGC-08-02G	8	1/4	14	19	17	7	32	42.5
BGC-08-03G	8	3/8	15	24	17	7	34	44.5
BGC-08-04G	8	1/2	16	30	17	7	36	46.5
BGC-10-02G	10	1/4	14	19	19	7	32	43.5
BGC-10-03G	10	3/8	15	24	19	7	34	45.5
BGC-10-04G	10	1/2	16	30	19	7	36	47.5
BGC-12-02G	12	1/4	14	19	22	7	32	43.5
BGC-12-03G	12	3/8	15	24	22	7	34	45.5
BGC-12-04G	12	1/2	16	30	22	7	36	47.5

Female Elbow

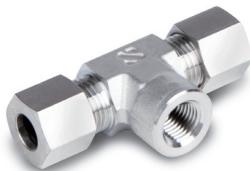
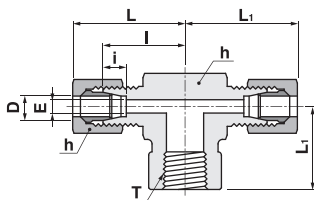
BLF



Part No.	Tube O.D	PT	E	Width across flat		i	l	Approx	
	D			H ₁	H			L ₁	L
BLF-08-02R	8	1/4	6	19	17	7	24	24	34.5
BLF-10-02R	10	1/4	8	19	19	7	24	24	35.5
BLF-12-02R	12	1/4	10	19	22	7	24	24	35.5
BLF-12-03R	12	3/8	10	24	22	7	29	29	40.5
BLF-15-03R	15	3/8	12	24	27	7.5	29	29	41.5
BLF-15-04R	15	1/2	12	30	27	7.5	33	33	45.5
BLF-16-04R	16	1/2	13	30	30	7.5	33	33	45.5
BLF-18-04R	18	1/2	14	30	32	8	33	33	45.5
BLF-20-06R	20	3/4	17	36	36	8	36	36	48.5
BLF-22-06R	22	3/4	18	36	36	9	36	36	48.5
BLF-25-06R	25	3/4	20	36	41	10	36	36	49.5
BLF-25-08R	25	1	20	46	41	10	36	46	59.5
BLF-28-08R	28	1	22	46	46	10	46	46	60
BLF-30-10R	30	1-1/4	25	55	46	10	55	55	69.5
BLF-32-10R	32	1-1/4	26	55	50	11	55	55	69.5
BLF-35-10R	35	1-1/4	28	55	55	11	55	55	72.5

Female Branch Tee

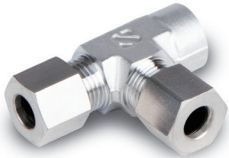
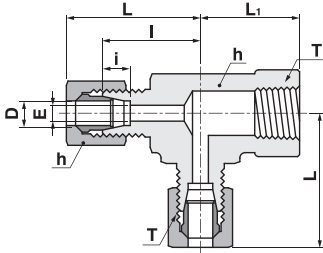
BBTF



Part No.	Tube O.D	PT	E	Width across flat		i	l	Approx	
	D			h	H			L	L ₁
BBTF-06-01R	6	1/8	4	17	14	7	23	34.5	24
BBTF-08-02R	8	1/4	6	19	17	7	24	34.5	24
BBTF-10-02R	10	1/4	8	19	19	7	24	35.5	24
BBTF-12-02R	12	1/4	10	19	22	7	24	35.5	24
BBTF-12-03R	12	3/8	10	24	22	7	29	40.5	29
BBTF-15-03R	15	3/8	12	24	27	7.5	29	41.5	29
BBTF-15-04R	15	1/2	12	30	27	7.5	33	45.5	33
BBTF-16-04R	16	1/2	13	30	30	7.5	33	45.5	33
BBTF-18-04R	18	1/2	14	30	32	8	33	45.5	33
BBTF-20-06R	20	3/4	17	36	36	8	36	48.5	36
BBTF-22-06R	22	3/4	18	36	36	9	36	48.5	36
BBTF-25-06R	25	3/4	20	36	41	10	36	49.5	36
BBTF-25-08R	25	1	20	46	41	10	46	59.5	46
BBTF-28-08R	28	1	22	46	46	10	46	60	46
BBTF-30-08R	30	1	25	46	46	10	46	60.5	46
BBTF-30-10R	30	1-1/4	25	55	46	10	55	69.5	55
BBTF-32-10R	32	1-1/4	26	55	50	11	55	69.5	55
BBTF-35-10R	35	1-1/4	28	55	55	11	55	72.5	55
BBTF-06A-02R	10.5	1/4	8	19	19	7	24	35.5	24
BBTF-08A-03R	13.8	3/8	11	24	24	7.5	29	41	29
BBTF-10A-04R	17.3	1/2	14	30	32	8	33	45.5	33
BBTF-15A-06R	21.7	3/4	18	36	36	9	36	48.5	36
BBTF-20A-08R	27.2	1	22	46	46	10	46	60	46
BBTF-25A-10R	34.0	1-1/4	28	55	55	11	55	72.5	55

Female Run Tee

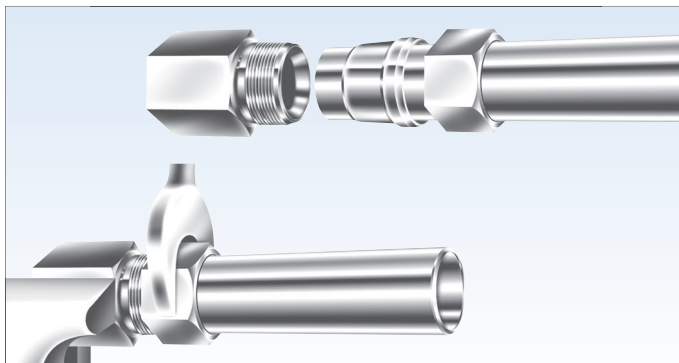
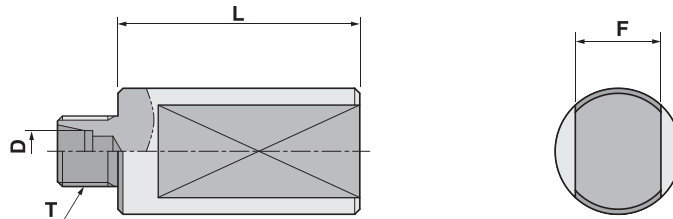
BRTF



Part No.	Tube O.D	PT	E	Width across flat		i	l	Approx	
	D			h	H			L	L ₁
BRTF-06-01R	6	1/8	4	17	14	7	23	34.5	24
BRTF-08-02R	8	1/4	6	19	17	7	24	34.5	24
BRTF-10-02R	10	1/4	8	19	19	7	24	35.5	24
BRTF-12-02R	12	1/4	10	19	22	7	24	35.5	24
BRTF-12-03R	12	3/8	10	24	22	7	29	40.5	29
BRTF-15-03R	15	3/8	12	24	27	7.5	29	41.5	29
BRTF-15-04R	15	1/2	12	30	27	7.5	33	45.5	33
BRTF-16-04R	16	1/2	13	30	30	7.5	33	45.5	33
BRTF-18-04R	18	1/2	14	30	32	8	33	45.5	33
BRTF-20-06R	20	3/4	17	36	36	8	36	48.5	36
BRTF-22-06R	22	3/4	18	36	36	9	36	48.5	36
BRTF-25-06R	25	3/4	20	36	41	10	36	49.5	36
BRTF-25-08R	25	1	20	46	41	10	46	59.5	46
BRTF-28-08R	28	1	22	46	46	10	46	60	46
BRTF-30-08R	30	1	25	46	46	10	46	60.5	46
BRTF-30-10R	30	1-1/4	25	55	46	10	55	69.5	55
BRTF-32-10R	32	1-1/4	26	55	50	11	55	69.5	55
BRTF-35-10R	35	1-1/4	28	55	55	11	55	72.5	55
BRTF-06A-02R	10.5	1/4	8	19	19	7	24	35.5	24
BRTF-08A-03R	13.8	3/8	11	24	24	7.5	29	41	29
BRTF-10A-04R	17.3	1/2	14	30	32	8	33	45.5	33
BRTF-15A-06R	21.7	3/4	18	36	36	9	36	48.5	36
BRTF-20A-08R	27.2	1	22	46	46	10	46	60	46
BRTF-25A-10R	34.0	1-1/4	28	55	55	11	55	72.5	55

Preswaging Tool

BPST

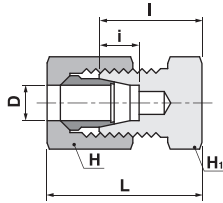


When assembling Bite type fitting in close corner or in cabinet it may be advantageous to use this jig. It allows presetting sleeve on to the tube in a more open or safe area. After using this jig, follow the reassembly instruction.

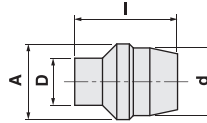
Tubing may occasionally stick in the jig after pull-up. When this happens, loosen the tube by gently rocking back and forth. Do not rock up and down or turn the tube as this may damage sealing surfaces of fitting.

Part No.	Tube O.D	L	F	T
	D			
BPST-06	6	40	17	M12 x 1.5
BPST-08	8	40	17	M14 x 1.5
BPST-10	10	40	17	M16 x 1.5
BPST-12	12	40	27	M18 x 1.5
BPST-15	15	40	27	M22 x 1.5
BPST-16	16	40	27	M24 x 1.5
BPST-18	18	40	27	M26 x 1.5
BPST-20	20	40	41	M28 x 1.5
BPST-22	22	40	41	M30 x 1.5
BPST-25	25	40	41	M35 x 1.5
BPST-06A	10.5	40	17	M16 x 1.5
BPST-08A	13.8	40	27	M20 x 1.5
BPST-10A	17.3	40	27	M26 x 1.5
BPST-15A	21.7	40	41	M30 x 1.5

Cap
BC



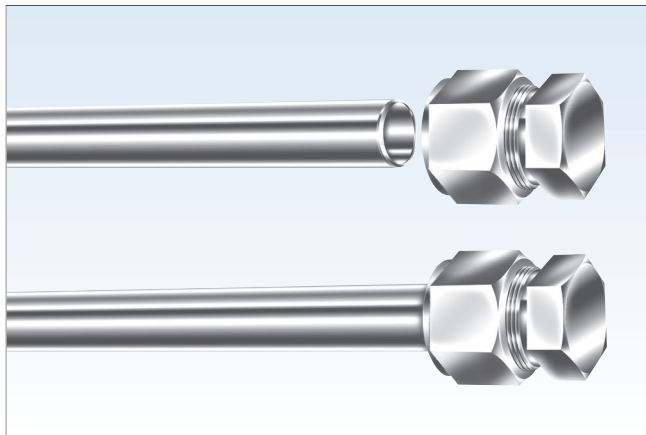
Plug
BP



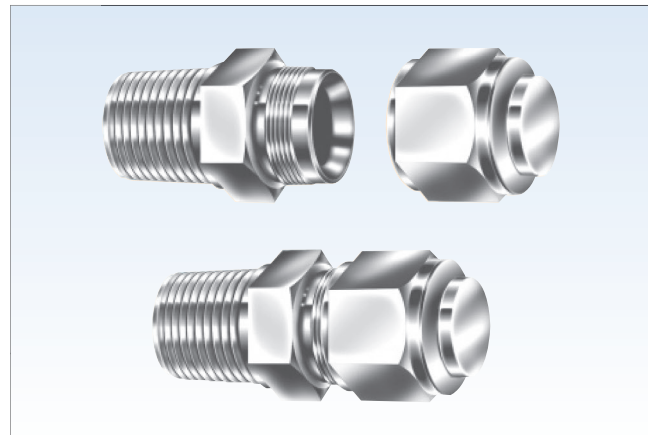
Part No.	Tube O.D		Width across flat		i	I	Approx
	D	H ₁	H	L			
BC-06	6	14	14	7	18	28.5	
BC-08	8	17	17	7	19	29.5	
BC-10	10	17	19	7	20	31.5	
BC-12	12	19	22	7	20	31.5	
BC-15	15	24	27	7.5	22	34.5	
BC-16	16	27	30	7.5	24	36.5	
BC-18	18	27	32	8	24	36.5	
BC-20	20	30	36	8	24	36.5	
BC-22	22	32	36	9	25	37.5	
BC-25	25	36	41	10	25	38.5	
BC-28	28	41	46	10	28	42	
BC-30	30	41	46	10	28	42.5	
BC-32	32	46	50	11	30	44.5	

Part No.	Tube O.D	E	A	I
	D			
BP-06	6	8	9	13.5
BP-08	8	10	11	13.5
BP-10	10	12	13	14.5
BP-12	12	14	15	14.5
BP-15	15	17	18	16
BP-16	16	18	19	16
BP-18	18	20	21	17.5
BP-20	20	22	23	17.5
BP-22	22	24	25	17.5
BP-25	25	27.4	28.5	19
BP-28	28	30.4	31.5	19
BP-30	30	32.4	33.5	20
BP-32	32	34.4	35.5	20

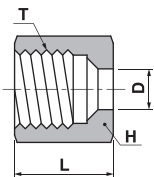
Cap for tube end



Plug for unused Bite type fitting port

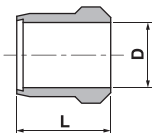


**Nut
BN**



Part No.	Tube O.D		Width across flat	
	D	T	H	L
BN-06	6	M12 x 1.5	14	15
BN-08	8	M14 x 1.5	17	15
BN-10	10	M16 x 1.5	19	16
BN-12	12	M18 x 1.5	22	16
BN-15	15	M22 x 1.5	27	19
BN-16	16	M24 x 1.5	30	19
BN-18	18	M26 x 1.5	32	19
BN-20	20	M28 x 1.5	36	19
BN-22	22	M30 x 1.5	36	19
BN-25	25	M35 x 1.5	41	20
BN-28	28	M38 x 1.5	46	21
BN-30	30	M40 x 1.5	46	22
BN-32	32	M42 x 1.5	50	22
BN-35	35	M45 x 1.5	55	25
BN-38	38	M48 x 1.5	60	27
BN-40	40	M52 x 2.0	60	29.5
BN-42	42	M52 x 2.0	60	29.5
BN-06A	10.5	M16 x 1.5	19	16
BN-08A	13.8	M20 x 1.5	24	18
BN-10A	17.3	M26 x 1.5	32	19
BN-15A	21.7	M30 x 1.5	36	19
BN-20A	27.2	M38 x 1.5	46	21
BN-25A	34.0	M45 x 1.5	55	25
BN-32A	42.7	M56 x 2.0	65	30.5
BN-40A	48.6	M64 x 2.0	75	31.5

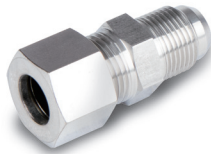
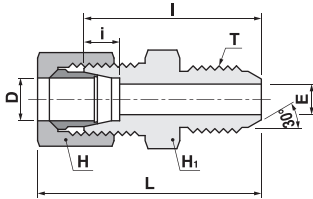
**Sleeve
BS**



Part No.	Tube O.D		L
	D		
BS-06	6		9
BS-08	8		9
BS-10	10		10
BS-12	12		10
BS-15	15		10
BS-16	16		10
BS-18	18		10
BS-20	20		10
BS-22	22		10
BS-25	25		11
BS-28	28		11
BS-30	30		11
BS-32	32		11
BS-35	35		14
BS-38	38		14
BS-40	40		14
BS-42	42		14
BS-06A	10.5		10
BS-08A	13.8		10
BS-10A	17.3		10
BS-15A	21.7		10
BS-20A	27.2		11
BS-25A	34.0		14
BS-32A	42.7		14
BS-40A	48.6		14

Hose Male Union

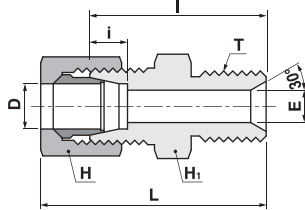
BHUM



Part No.	Tube O.D	PF T	E	Width across flat		i	I	L
	D			H ₁	H			
BHUM-06-01G	6	1/8	4	14	14	7	34	44.5
BHUM-08-02G	8	1/4	6	17	17	7	35	45.5
BHUM-08-03G	8	3/8	6	19	17	7	37	47.5
BHUM-10-02G	10	1/4	6	17	19	7	35	46.5
BHUM-10-03G	10	3/8	8	19	19	7	37	48.5
BHUM-10-04G	10	1/2	8	22	19	7	40	51.5
BHUM-12-02G	12	1/4	6	19	22	7	35	46.5
BHUM-12-03G	12	3/8	9	19	22	7	37	48.5
BHUM-12-04G	12	1/2	10	22	22	7	40	51.5
BHUM-15-03G	15	3/8	9	24	27	7.5	40	52.5
BHUM-15-04G	15	1/2	12	24	27	7.5	42	54.5
BHUM-16-03G	16	3/8	9	27	30	7.5	40	52.5
BHUM-16-04G	16	1/2	12	27	30	7.5	42	54.5
BHUM-18-04G	18	1/2	12	27	32	8	42	54.5
BHUM-20-06G	20	3/4	16	30	36	8	46	58.5
BHUM-22-04G	22	1/2	12	32	36	9	44	56.5
BHUM-22-06G	22	3/4	16	32	36	9	46	58.5
BHUM-25-06G	25	3/4	16	36	41	10	47	60.5
BHUM-25-08G	25	1	20	36	41	10	49	62.5
BHUM-28-06G	28	3/4	16	41	46	10	49	63
BHUM-28-08G	28	1	22	41	46	10	51	65
BHUM-30-06G	30	3/4	16	41	46	10	49	63.5
BHUM-30-08G	30	1	22	41	46	10	51	65.5
BHUM-32-08G	32	1	22	46	50	11	52	66.5
BHUM-32-10G	32	1-1/4	28	46	50	11	56	70.5

Hose Female Union

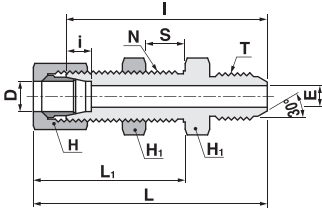
BHUF



Part No.	Tube O.D	PF T	E	Width across flat		i	I	L
	D			H ₁	H			
BHUF-06-01G	6	1/8	4	14	14	7	32	43.5
BHUF-08-02G	8	1/4	6	17	17	7	33	43.5
BHUF-08-03G	8	3/8	6	19	17	7	34	44.5
BHUF-10-02G	10	1/4	6	17	19	7	33	44.5
BHUF-10-03G	10	3/8	8	19	19	7	34	45.5
BHUF-10-04G	10	1/2	8	22	19	7	38	49.5
BHUF-12-02G	12	1/4	6	19	22	7	33	44.5
BHUF-12-03G	12	3/8	9	19	22	7	34	45.5
BHUF-12-04G	12	1/2	10	22	22	7	38	49.5
BHUF-15-03G	15	3/8	9	24	27	7.5	37	49.5
BHUF-15-04G	15	1/2	12	24	27	7.5	40	52.5
BHUF-16-03G	16	3/8	9	27	30	7.5	37	49.5
BHUF-16-04G	16	1/2	12	27	30	7.5	40	52.5
BHUF-18-04G	18	1/2	12	27	32	8	40	52.5
BHUF-20-06G	20	3/4	16	30	36	8	43	55.5
BHUF-22-04G	22	1/2	12	32	36	9	42	54.5
BHUF-22-06G	22	3/4	16	32	36	9	43	55.5
BHUF-25-06G	25	3/4	16	36	41	10	44	57.5
BHUF-25-08G	25	1	20	36	41	10	46	59.5
BHUF-28-06G	28	3/4	16	41	46	10	46	60
BHUF-28-08G	28	1	22	41	46	10	48	62
BHUF-30-06G	30	3/4	16	41	46	10	46	60.5
BHUF-30-08G	30	1	22	41	46	10	48	62.5
BHUF-32-08G	32	1	22	46	50	11	49	63.5
BHUF-32-10G	32	1-1/4	28	46	50	11	55	69.5
BHUF-38-12G	38	1-1/2	32	50	60	12	57	76.5
BHUF-40-12G	40	1-1/2	32	55	60	12	62	81.5

Hose Bulkhead
Male Union

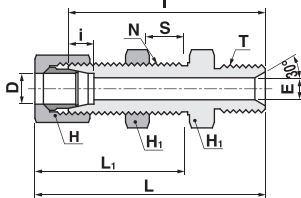
BHBM



Part No.	Tube O.D	PF T	E	Width across flat		i	I	L ₁	L	Panel Hole	Max. Panel
	D			H ₁	H					Drill Size	Thickness
				N	S						
BHBM-06-01G	6	1/8	4	17	14	7	54	42.5	63.5	12.5	13
BHBM-08-02G	8	1/4	6	19	17	7	55	42.5	65.5	14.5	13
BHBM-08-03G	8	3/8	6	19	17	7	57	42.5	67.5	14.5	13
BHBM-10-02G	10	1/4	6	22	19	7	56	43.5	67.5	16.5	13
BHBM-10-03G	10	3/8	8	22	19	7	58	43.5	69.5	16.5	13
BHBM-10-04G	10	1/2	8	22	19	7	60	43.5	71.5	16.5	13
BHBM-12-02G	12	1/4	6	24	22	7	56	43.5	67.5	18.5	13
BHBM-12-03G	12	3/8	9	24	22	7	58	43.5	69.5	18.5	13
BHBM-12-04G	12	1/2	10	24	22	7	60	43.5	71.5	18.5	13
BHBM-15-03G	15	3/8	9	27	27	7.5	63	49.5	75.5	22.5	15
BHBM-15-04G	15	1/2	12	27	27	7.5	65	49.5	77.5	22.5	15
BHBM-16-03G	16	3/8	9	30	30	7.5	65	49.5	77.5	24.5	15
BHBM-16-04G	16	1/2	12	30	30	7.5	67	49.5	79.5	24.5	15
BHBM-18-04G	18	1/2	12	32	32	8	69	51.5	81.5	26.5	15
BHBM-20-06G	20	3/4	16	32	36	8	71	51.5	83.5	28.5	15
BHBM-22-04G	22	1/2	12	36	36	9	70	51.5	82.5	30.5	15
BHBM-22-06G	22	3/4	16	36	36	9	72	51.5	84.5	30.5	15
BHBM-25-06G	25	3/4	16	41	41	10	72	52.5	87.5	35.5	15
BHBM-25-08G	25	1	20	41	41	10	74	52.5	89.5	35.5	15
BHBM-28-06G	28	3/4	16	46	46	10	75	55	89	38.5	15
BHBM-28-08G	28	1	22	46	46	10	77	55	91	38.5	15
BHBM-30-06G	30	3/4	16	46	46	10	75	55.5	89.5	40.5	15
BHBM-30-08G	30	1	22	46	46	10	77	55.5	91.5	40.5	15
BHBM-32-08G	32	1	22	50	50	11	81	57.5	95.5	42.5	15
BHBM-32-10G	32	1-1/4	28	50	50	11	85	57.5	99.5	42.5	15

Hose Bulkhead
Female Union

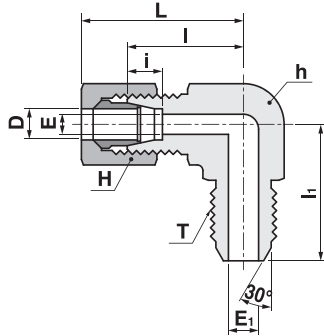
BHBF



Part No.	Tube O.D	PF T	E	Width across flat		i	I	L ₁	L	Panel Hole	Max. Panel
	D			H ₁	H					Drill Size	Thickness
				N	S						
BHBF-06-01G	6	1/8	4	17	14	7	52	42.5	62.5	12.5	13
BHBF-08-02G	8	1/4	6	19	17	7	53	42.5	63.5	14.5	13
BHBF-08-03G	8	3/8	6	19	17	7	54	42.5	64.5	14.5	13
BHBF-10-02G	10	1/4	6	22	19	7	54	43.5	65.5	16.5	13
BHBF-10-03G	10	3/8	8	22	19	7	55	43.5	66.5	16.5	13
BHBF-10-04G	10	1/2	8	22	19	7	58	43.5	69.5	16.5	13
BHBF-12-02G	12	1/4	6	24	22	7	54	43.5	65.5	18.5	13
BHBF-12-03G	12	3/8	9	24	22	7	55	43.5	66.5	18.5	13
BHBF-12-04G	12	1/2	10	24	22	7	58	43.5	69.5	18.5	13
BHBF-15-03G	15	3/8	9	27	27	7.5	60	49.5	72.5	22.5	15
BHBF-15-04G	15	1/2	12	27	27	7.5	63	49.5	75.5	22.5	15
BHBF-16-03G	16	3/8	9	30	30	7.5	62	49.5	74.5	24.5	15
BHBF-16-04G	16	1/2	12	30	30	7.5	65	49.5	77.5	24.5	15
BHBF-18-04G	18	1/2	12	32	32	8	67	51.5	79.5	26.5	15
BHBF-20-06G	20	3/4	16	32	36	8	68	51.5	80.5	28.5	15
BHBF-22-04G	22	1/2	12	36	36	9	68	51.5	80.5	30.5	15
BHBF-22-06G	22	3/4	16	36	36	9	69	51.5	81.5	30.5	15
BHBF-25-06G	25	3/4	16	41	41	10	69	52.5	82.5	35.5	15
BHBF-25-08G	25	1	20	41	41	10	71	52.5	84.5	35.5	15
BHBF-28-08G	28	1	22	46	46	10	74	55	88	38.5	15
BHBF-30-06G	30	3/4	16	46	46	10	72	55.5	86.5	40.5	15
BHBF-30-08G	30	1	22	46	46	10	74	55.5	88.5	40.5	15
BHBF-32-08G	32	1	22	50	50	11	78	57.5	92.5	42.5	15
BHBF-32-10G	32	1-1/4	28	50	50	11	84	57.5	98.5	42.5	15
BHBF-38-12G	38	1-1/2	31	55	60	12	87	64.5	106.5	48.5	15
BHBF-40-12G	40	1-1/2	32	60	60	12	94	69.5	113.5	52.5	15

Hose Male Elbow

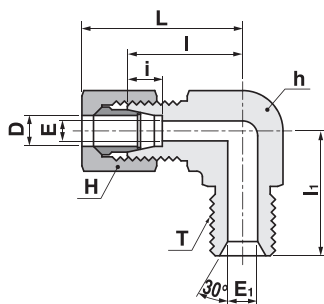
BHLM



Part No.	Tube O.D	PF T	E	E ₁	Width across flat		i	l	l ₁	L
	D				h	H				
BHLM-06-01G	6	1/8	4	4	14	14	7	20	25	33.5
BHLM-08-02G	8	1/4	6	6	17	17	7	23	25	33.5
BHLM-08-03G	8	3/8	6	9	19	17	7	24	28	34.5
BHLM-10-02G	10	1/4	8	6	19	19	7	24	28	35.5
BHLM-10-03G	10	3/8	8	9	19	19	7	24	28	35.5
BHLM-10-04G	10	1/2	8	12	24	19	7	29	34	40.5
BHLM-12-02G	12	1/4	10	6	19	22	7	24	28	35.5
BHLM-12-03G	12	3/8	10	9	19	22	7	24	28	35.5
BHLM-12-04G	12	1/2	10	12	24	22	7	29	34	40.5
BHLM-15-03G	15	3/8	12	9	24	27	7.5	29	33	41.5
BHLM-15-04G	15	1/2	12	12	24	27	7.5	29	34	41.5
BHLM-16-03G	16	3/8	13	9	27	30	7.5	32	36	44.5
BHLM-16-04G	16	1/2	13	12	27	30	7.5	32	38	44.5
BHLM-18-04G	18	1/2	14	12	27	32	8	32	38	44.5
BHLM-20-06G	20	3/4	17	16	30	36	8	33	41	45.5
BHLM-22-04G	22	1/2	18	12	32	36	9	34	40	46.5
BHLM-22-06G	22	3/4	18	16	32	36	9	34	42	46.5
BHLM-25-06G	25	3/4	20	16	36	41	10	36	44	49.5
BHLM-25-08G	25	1	20	20	36	41	10	36	46	49.5
BHLM-28-06G	28	3/4	22	16	41	46	10	41	47	55
BHLM-28-08G	28	1	22	22	41	46	10	41	49	55
BHLM-30-06G	30	3/4	25	16	41	46	10	41	47	55.5
BHLM-30-08G	30	1	25	22	41	46	10	41	49	55.5
BHLM-32-08G	32	1	26	22	46	50	11	46	54	60.5
BHLM-32-10G	32	1-1/4	26	28	46	50	11	46	56	60.5

Hose Female Elbow

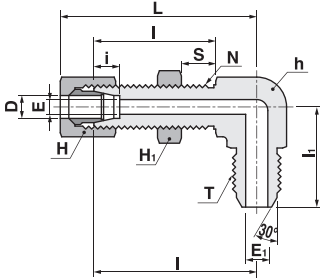
BHLF



Part No.	Tube O.D	PF T	E	E ₁	Width across flat		i	l	l ₁	L
	D				H ₁	H				
BHLF-08-02G	8	1/4	6	6	17	17	7	23	25	33.5
BHLF-08-03G	8	3/8	6	9	19	17	7	24	27	34.5
BHLF-10-02G	10	1/4	8	6	19	19	7	24	26	35.5
BHLF-10-03G	10	3/8	8	9	19	19	7	24	27	35.5
BHLF-10-04G	10	1/2	8	12	24	19	7	29	23	40.5
BHLF-12-02G	12	1/4	10	6	19	22	7	24	26	35.5
BHLF-12-03G	12	3/8	10	9	19	22	7	24	27	35.5
BHLF-12-04G	12	1/2	10	12	24	22	7	29	33	40.5
BHLF-15-03G	15	3/8	12	9	24	27	7.5	29	30	41.5
BHLF-15-04G	15	1/2	12	12	24	27	7.5	29	33	41.5
BHLF-16-03G	16	3/8	13	9	27	30	7.5	32	33	44.5
BHLF-16-04G	16	1/2	13	12	27	30	7.5	32	36	44.5
BHLF-18-04G	18	1/2	14	12	27	32	8	32	36	44.5
BHLF-20-06G	20	3/4	17	16	30	36	8	33	38	45.5
BHLF-22-04G	22	1/2	18	12	32	36	9	34	38	46.5
BHLF-22-06G	22	3/4	18	16	32	36	9	34	39	46.5
BHLF-25-06G	25	3/4	20	16	36	41	10	36	41	49.5
BHLF-25-08G	25	1	20	20	36	41	10	36	43	49.5
BHLF-28-06G	28	3/4	22	16	41	46	10	41	44	55
BHLF-28-08G	28	1	22	22	41	46	10	41	46	55
BHLF-30-06G	30	3/4	25	16	41	46	10	41	44	55.5
BHLF-30-08G	30	1	25	22	41	46	10	41	46	55.5
BHLF-32-08G	32	1	26	22	46	50	11	46	51	60.5
BHLF-32-10G	32	1-1/4	26	28	46	50	11	46	57	60.5
BHLF-38-12G	38	1-1/2	32	34	50	60	12	50	61	69.5
BHLF-40-12G	40	1-1/2	32	34	55	60	12	55	62	74.5

Hose Bulkhead
Male Elbow

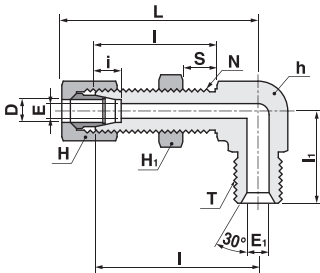
BHBLM



Part No.	Tube O.D D	PF T	E	E ₁	Width across flat			i	I	I ₁	L ₁	L	Panel Hole Drill Size N	Max. Panel Thickness S
					h	H ₁	H							
BHBLM-06-01G	6	1/8	4	4	17	17	14	7	45	28	42.5	56.5	12.5	13
BHBLM-08-02G	8	1/4	6	6	19	19	17	7	46	28	42.5	56.5	14.5	13
BHBLM-08-03G	8	3/8	6	9	19	19	17	7	46	30	42.5	56.5	14.5	13
BHBLM-10-02G	10	1/4	6	6	22	22	19	7	48	28	43.5	59.5	16.5	13
BHBLM-10-03G	10	3/8	8	9	22	22	19	7	48	30	43.5	59.5	16.5	13
BHBLM-10-04G	10	1/2	8	12	24	22	19	7	49	35	43.5	60.5	16.5	13
BHBLM-12-02G	12	1/4	6	6	24	24	22	7	49	31	43.5	60.5	18.5	13
BHBLM-12-03G	12	3/8	9	9	24	24	22	7	49	33	43.5	60.5	18.5	13
BHBLM-12-04G	12	1/2	10	12	24	24	22	7	49	35	43.5	60.5	18.5	13
BHBLM-15-03G	15	3/8	9	9	27	27	27	7.5	57	36	49.5	69.5	22.5	15
BHBLM-15-04G	15	1/2	12	12	27	27	27	7.5	57	37	49.5	69.5	22.5	15
BHBLM-16-03G	16	3/8	9	9	30	30	30	7.5	59	37	49.5	71.5	24.5	15
BHBLM-16-04G	16	1/2	12	12	30	30	30	7.5	59	38	49.5	71.5	24.5	15
BHBLM-18-04G	18	1/2	12	12	32	32	32	8	63	39	51.5	75.5	26.5	15
BHBLM-20-06G	20	3/4	16	16	32	32	36	8	65	40	51.5	77.5	28.5	15
BHBLM-22-04G	22	1/2	12	12	36	36	36	9	65	40	51.5	77.5	30.5	15
BHBLM-22-06G	22	3/4	16	16	36	36	36	9	65	40	51.5	77.5	30.5	15
BHBLM-25-06G	25	3/4	16	16	41	41	41	10	68	43	52.5	81.5	35.5	15
BHBLM-25-08G	25	1	20	20	41	41	41	10	68	43	52.5	81.5	35.5	15
BHBLM-28-06G	28	3/4	16	16	46	46	46	10	74	48	55	88	38.5	15
BHBLM-28-08G	28	1	22	22	46	46	46	10	74	48	55	88	38.5	15
BHBLM-30-06G	30	3/4	16	16	46	46	46	10	74	48	55.5	88.5	40.5	15
BHBLM-30-08G	30	1	22	22	46	46	46	10	74	48	55.5	88.5	40.5	15

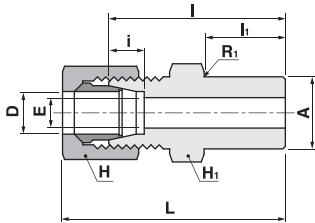
Hose Bulkhead
Female Elbow

BHBLF



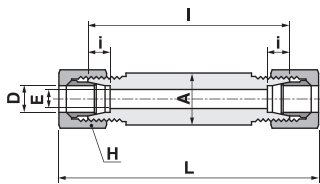
Part No.	Tube O.D D	PF T	E	E ₁	Width across flat			i	I	I ₁	L ₁	L	Panel Hole Drill Size N	Max. Panel Thickness S
					h	H ₁	H							
BHBLF-06-01G	6	1/8	4	4	17	17	14	7	45	26	42.5	56.5	12.5	13
BHBLF-08-02G	8	1/4	6	6	19	19	17	7	46	26	42.5	56.5	14.5	13
BHBLF-08-03G	8	3/8	6	9	19	19	17	7	46	27	42.5	56.5	14.5	13
BHBLF-10-02G	10	1/4	6	6	22	22	19	7	48	28	43.5	59.5	16.5	13
BHBLF-10-03G	10	3/8	8	9	22	22	19	7	48	29	43.5	59.5	16.5	13
BHBLF-10-04G	10	1/2	8	12	22	22	19	7	49	33	43.5	60.5	16.5	13
BHBLF-12-02G	12	1/4	6	6	24	24	22	7	49	30	43.5	60.5	18.5	13
BHBLF-12-03G	12	3/8	9	9	24	24	22	7	49	30	43.5	60.5	18.5	13
BHBLF-12-04G	12	1/2	10	12	24	24	22	7	49	33	43.5	60.5	18.5	13
BHBLF-15-03G	15	3/8	9	9	27	27	27	7.5	57	33	49.5	69.5	22.5	15
BHBLF-15-04G	15	1/2	12	12	27	27	27	7.5	57	36	49.5	69.5	22.5	15
BHBLF-16-03G	16	3/8	9	9	30	30	30	7.5	59	34	49.5	71.5	24.5	15
BHBLF-16-04G	16	1/2	12	12	30	30	30	7.5	59	37	49.5	71.5	24.5	15
BHBLF-18-04G	18	1/2	12	12	32	32	32	8	63	37	51.5	75.5	26.5	15
BHBLF-20-06G	20	3/4	16	16	32	32	36	8	65	40	51.5	77.5	28.5	15
BHBLF-22-04G	22	1/2	12	12	36	36	36	9	65	40	51.5	77.5	30.5	15
BHBLF-22-06G	22	3/4	16	16	36	36	36	9	65	40	51.5	77.5	30.5	15
BHBLF-25-06G	25	3/4	16	16	41	41	41	10	68	43	52.5	81.5	35.5	15
BHBLF-25-08G	25	1	20	20	41	41	41	10	68	43	52.5	81.5	35.5	15
BHBLF-28-06G	28	3/4	16	16	46	46	46	10	74	48	55	88	38.5	15
BHBLF-28-08G	28	1	22	22	46	46	46	10	74	48	55	88	38.5	15
BHBLF-30-06G	30	3/4	16	16	46	46	46	10	74	48	55.5	88.5	40.5	15
BHBLF-30-08G	30	1	22	22	46	46	46	10	74	48	55.5	88.5	40.5	15

Welding
Connector
BCW



Part No.	Tube O.D	A	E	Width across flat		i	I	I ₁	L
	D			H ₁	H				
BCW-06	6	12	4	14	14	7	29	11	39.5
BCW-08	8	14	6	17	17	7	34	15	44.5
BCW-10	10	16	8	17	19	7	34	15	45.5
BCW-12	12	18	10	19	22	7	34	15	45.5
BCW-15	15	21	12	24	27	7.5	40	18	52.5
BCW-16	16	22	13	27	30	7.5	44	22	56.5
BCW-18	18	25	14	27	32	8	44	22	56.5
BCW-20	20	28	17	30	36	8	46	22	58.5
BCW-22	22	28	18	32	36	9	46	22	58.5
BCW-25	25	33	20	36	41	10	51	26	64.5
BCW-28	28	36	22	41	46	10	55	28	69
BCW-30	30	39	25	41	46	10	55	28	69.5
BCW-32	32	40	26	46	50	11	56	28	70.5
BCW-35	35	43	28	46	55	11	56	28	73.5
BCW-38	38	45	32	50	60	12	58	28	77.5
BCW-40	40	46	32	55	60	12	65	30	84.5
BCW-06A	10.5	16	8	17	19	7	34	15	45.5
BCW-08A	13.8	19	11	22	24	7.5	40	18	52
BCW-10A	17.3	24	14	27	32	8	44	22	56.5
BCW-15A	21.7	28	18	32	36	9	46	22	58.5
BCW-20A	27.2	33	22	41	46	10	52	25	66
BCW-25A	34.0	40	28	46	55	11	56	28	73.5
BCW-32A	42.7	47	34	60	65	12	65	28	85.5
BCW-40A	48.6	55	40	65	75	12	70	30	91.5

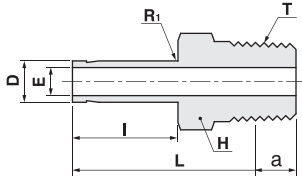
Welding Bulkhead
Union
BBUW



Part No.	Tube O.D	A	E	Width across flat	i	I	L
	D			H			
BBUW-06	6	16	4	14	7	74	95
BBUW-08	8	16	6	17	7	74	95
BBUW-10	10	19	8	19	7	74	97
BBUW-12	12	20	10	22	7	74	97
BBUW-15	15	25	12	27	7.5	78	103
BBUW-16	16	28	13	30	7.5	78	103
BBUW-18	18	28	14	32	8	78	103
BBUW-20	20	32	17	36	8	78	103
BBUW-22	22	32	18	36	9	78	103
BBUW-25	25	38	20	41	10	78	105
BBUW-28	28	39	22	46	10	82	110
BBUW-30	30	46	25	46	10	82	111
BBUW-32	32	46	26	50	11	82	111
BBUW-35	35	46	28	55	11	82	117
BBUW-38	38	55	32	60	12	82	121
BBUW-40	40	55	32	60	12	90	129
BBUW-06A	10.5	19	8	19	7	74	97
BBUW-08A	13.8	22	11	24	7.5	78	102
BBUW-10A	17.3	28	14	32	8	78	103
BBUW-15A	21.7	32	18	36	9	78	103
BBUW-20A	27.2	39	22	46	10	82	110
BBUW-25A	34.0	46	28	55	11	82	117
BBUW-32A	42.7	58	34	65	12	90	131
BBUW-40A	48.6	65	40	75	12	90	133

Adapter

BA-R

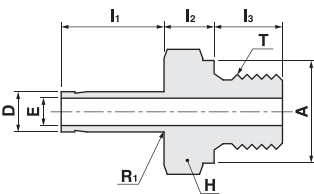


Part No.	Tube O.D	PT	E	Basic Gauge	Width across flat	I	L
	D			length	H		
				a			
BA-06-01R	6	1/8	3	3.97	12	20	32
BA-08-02R	8	1/4	5	6.01	14	20	35
BA-10-02R	10	1/4	6	6.01	14	21	36
BA-10-03R	10	3/8	6	6.35	19	21	36.5
BA-12-02R	12	1/4	7	6.01	14	22	37
BA-12-03R	12	3/8	8	6.35	19	22	37.5
BA-15-03R	15	3/8	8	6.35	19	24	40.5
BA-15-04R	15	1/2	10	8.16	22	24	43
BA-16-04R	16	1/2	11	8.16	22	24	43
BA-18-04R	18	1/2	12	8.16	22	24	43
BA-20-06R	20	3/4	14	9.53	27	25	46.5
BA-22-06R	22	3/4	14	9.53	27	26	47.5
BA-25-06R	25	3/4	16	9.53	27	28	49.5
BA-25-08R	25	1	17	10.39	36	28	52.5
BA-28-08R	28	1	18	10.39	36	28	52.5
BA-30-08R	30	1	20	10.39	36	29	53.5
BA-30-10R	30	1-1/4	20	12.7	46	29	55
BA-32-10R	32	1-1/4	22	12.7	46	30	56
BA-38-12R	38	1-1/2	26	12.7	50	36	64.5
BA-40-12R	40	1-1/2	28	12.7	50	36	64
BA-06A-02R	10.5	1/4	6	6.01	14	21	36
BA-08A-03R	13.8	3/8	9	6.35	19	22	38.5
BA-10A-04R	17.3	1/2	11	8.16	22	24	43
BA-15A-06R	21.7	3/4	14	9.53	27	26	47.5
BA-20A-08R	27.2	1	18	10.39	36	28	52.5
BA-25A-10R	34.0	1-1/4	23	12.7	46	33	59
BA-32A-12R	42.7	1-1/2	29	12.7	50	36	67
BA-40A-16R	48.6	2	33	15.88	65	37	72

Adapter

(For Bonded Seal Gasket)

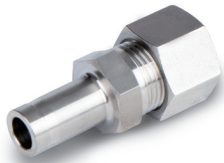
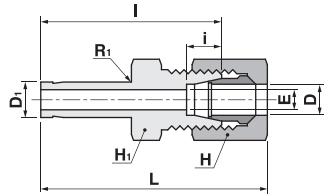
BA-G



Part No.	Tube O.D	PT	E	Width across flat	A	I ₁	I ₂	I ₃
	D			H				
BA-06-01G	6	1/8	3	14	14	20	8	8
BA-08-02G	8	1/4	5	19	18	20	9	12
BA-10-02G	10	1/4	6	19	18	21	9	12
BA-10-03G	10	3/8	6	22	21.5	21	10	12
BA-12-02G	12	1/4	7	19	18	22	9	12
BA-12-03G	12	3/8	8	22	21.5	22	10	12
BA-15-03G	15	3/8	8	22	21.5	24	10	12
BA-15-04G	15	1/2	10	27	25.5	24	13	14
BA-16-04G	16	1/2	11	27	25.5	24	13	14
BA-18-04G	18	1/2	12	27	25.5	24	13	14
BA-20-06G	20	3/4	14	32	31.5	25	16	16
BA-22-06G	22	3/4	14	32	31.5	26	16	16
BA-25-06G	25	3/4	16	32	31.5	28	16	16
BA-25-08G	25	1	17	41	38	28	18	18
BA-28-08G	28	1	18	41	38	28	18	18
BA-30-08G	30	1	20	41	38	29	21	18
BA-30-10G	30	1-1/4	20	50	48.5	29	21	20
BA-32-10G	32	1-1/4	22	50	48.5	30	21	20
BA-38-12G	38	1-1/2	26	55	53.5	36	21	21
BA-40-12G	40	1-1/2	28	55	53.5	36	21	21
BA-06A-02G	10.5	1/4	6	19	18	21	9	12
BA-08A-03G	13.8	3/8	9	22	21.5	22	10	12
BA-10A-04G	17.3	1/2	11	27	25.5	24	13	14
BA-15A-06G	21.7	3/4	14	32	31.5	26	16	16
BA-20A-08G	27.2	1	18	41	38	28	18	18
BA-25A-10G	34.0	1-1/4	23	50	48.5	33	21	20
BA-32A-12G	42.7	1-1/2	29	55	53.5	36	23	21
BA-40A-16G	48.6	2	33	70	66	37	28	24

Reducer

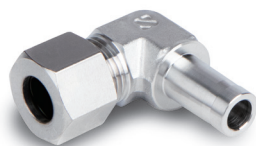
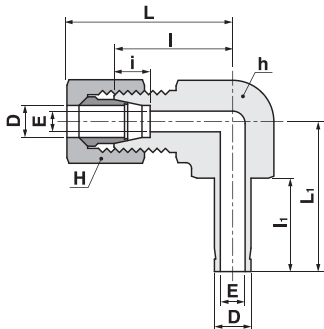
BR



Part No.	Tube O.D		E	Width across flat		i	I	L
	D ₁	D		H ₁	H			
BR-08-06	8	6	4	14	14	7	39	49.5
BR-10-06	10	6	4	14	14	7	40	50.5
BR-10-08	10	8	6	17	17	7	40	50.5
BR-12-06	12	6	4	14	14	7	41	51.5
BR-12-08	12	8	6	17	17	7	41	51.5
BR-12-10	12	10	8	17	19	7	41	52.5
BR-15-08	15	8	6	17	17	7	43	53.5
BR-15-10	15	10	8	17	19	7	43	54.5
BR-16-06	16	6	4	17	14	7	43	53.5
BR-16-10	16	10	8	17	19	7	43	54.5
BR-16-12	16	12	10	19	22	7	43	54.5
BR-18-10	18	10	8	19	19	7	44	55.5
BR-18-15	18	15	12	24	27	7.5	45	57.5
BR-20-06	20	6	4	22	14	7	45	55.5
BR-20-12	20	12	10	22	22	7	45	56.5
BR-20-16	20	16	13	27	30	7.5	47	59.5
BR-22-15	22	15	12	24	27	7.5	48	60.5
BR-22-18	22	18	14	27	32	8	48	60.5
BR-25-16	25	16	13	27	30	7.5	50	62.5
BR-25-20	25	20	17	30	36	8	52	64.5
BR-28-18	28	18	14	30	32	8	52	64.5
BR-28-22	28	22	18	32	36	9	52	64.5
BR-30-20	30	20	17	32	36	8	53	65.5
BR-30-25	30	25	20	36	41	10	54	67.5
BR-32-25	32	25	20	36	41	10	55	68.5
BR-35-22	35	22	18	36	36	9	58	70.5
BR-35-28	35	28	22	41	46	10	60	74
BR-38-25	38	25	20	41	41	10	61	74.5
BR-38-30	38	30	25	41	46	10	63	77.5
BR-08A-6A	13.8	10.5	8	17	19	7	41	52.5
BR-10A-6A	17.3	10.5	8	19	19	7	44	55.5
BR-10A-8A	17.3	13.8	11	22	24	7.5	46	58
BR-15A-8A	21.7	13.8	11	24	24	7.5	48	60
BR-15A-10A	21.7	17.3	14	27	32	8	48	60.5
BR-20A-10A	27.2	17.3	14	30	32	8	52	64.5
BR-20A-15A	27.2	21.7	18	32	36	9	52	64.5
BR-25A-15A	34	21.7	18	36	36	9	58	70.5
BR-25A-20A	34	27.2	22	41	46	10	60	74

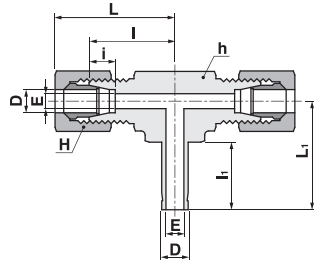
Positionable Elbow

BLA



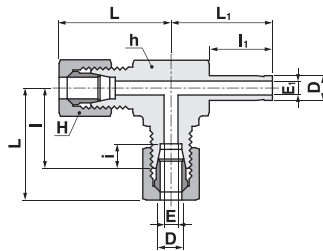
Part No.	Tube O.D	E	Width across flat		i	I	I ₁	L ₁	L
	D		h	H					
BLA-10	10	8	17	19	7	23	21	34.5	35
BLA-12	12	10	19	22	7	24	22	35.5	36
BLA-15	15	12	24	27	7.5	29	24	44.5	40
BLA-16	16	13	27	30	7.5	32	24	44.5	43
BLA-18	18	14	27	32	8	32	24	44.5	43
BLA-20	20	17	30	36	8	33	25	45.5	45
BLA-22	22	18	32	36	9	34	26	46.5	46
BLA-25	25	20	36	41	10	36	28	49.5	48
BLA-28	28	22	41	46	10	41	28	55	53
BLA-30	30	25	41	46	10	41	29	55.5	54
BLA-32	32	26	46	50	11	50	30	64.5	66
BLA-38	38	32	50	60	12	50	36	69.5	72

Positionable
Branch Tee
BBTA



Part No.	Tube O.D	E	E ₁	Width across flat		i	I	I ₁	L	L ₁
	D			h	H					
BBTA-10	10	8	6	17	19	7	23	21	34.5	35
BBTA-12	12	10	8	19	22	7	24	22	35.5	37
BBTA-15	15	12	10	24	27	7.5	29	24	44.5	43
BBTA-16	16	13	11	27	30	7.5	32	24	44.5	43
BBTA-18	18	14	12	27	32	8	32	24	44.5	43
BBTA-20	20	17	14	30	36	8	33	25	45.5	45
BBTA-22	22	18	14	32	36	9	34	26	46.5	46
BBTA-25	25	20	17	36	41	10	36	28	49.5	49

Positionable
Run Tee
BRTA



Part No.	Tube O.D	E	E ₁	Width across flat		i	I	I ₁	L	L ₁
	D			h	H					
BRTA-10	10	8	6	17	19	7	23	21	34.5	35
BRTA-12	12	10	8	19	22	7	24	22	35.5	37
BRTA-15	15	12	10	24	27	7.5	29	24	44.5	43
BRTA-16	16	13	11	27	30	7.5	32	24	44.5	43
BRTA-18	18	14	12	27	32	8	32	24	44.5	43
BRTA-20	20	17	14	30	36	8	33	25	45.5	45
BRTA-22	22	18	14	32	36	9	34	26	46.5	46
BRTA-25	25	20	17	36	41	10	36	28	49.5	49